

# Barngate Street

Leek ST13 8AY

The Wrekin

Housing Trust



A new development of houses for affordable rent in Leek.

Available from early 2017.

Located just outside Leek town centre, this development on Barngate Street (the site of the old Slimma factory) will consist of 20 two and three-bedroom terraced houses, available for affordable rent.

Situated close to the head of the Churnet River in North Staffordshire, Leek is surrounded by some of the finest hill, moor and dale scenery to be found in this part of the North Midlands and neighbours the Peak District National Park.

Often described glowingly as the 'Queen of the Moorlands', Leek has had a lengthy history and retains its essential character as a market town serving a wide area and continues to grow in importance as a residential area. Numerous bus services link it with the rest of Staffordshire and much of nearby Derbyshire, Cheshire and Manchester.

The development has easy access to shops and amenities in the historic town of Leek. The town has modern schools, a Further Education College (Buxton and Leek College) which forms part of the University of Derby and an excellent shopping centre that includes a new pedestrianised area and a traditional open market.

Recreational facilities include many parks and open spaces, including tennis and squash courts, two golf courses, bowling greens,

Priority for these new homes will be given to people already residing in Leek or with a strong local connection to Leek

running track, cricket and football pitches. Leek also has a large indoor swimming pool. The Nicholson Institute houses an admirable museum and art gallery in addition to a well-stocked county library.

Completion early 2017.

Click here to see the location on [Google Maps](#)



For more information about Barngate Street please contact Dave Williams on 01952 217448

# Barngate Street

Leek ST13 8AY

## Site map



Three bedroom house

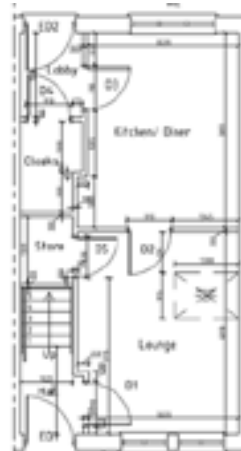
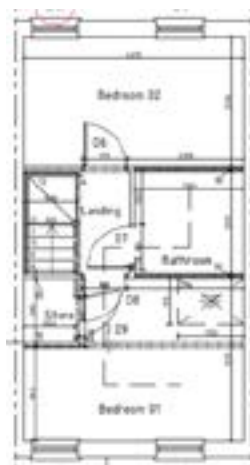


Two bedroom house



For more information about Barngate Street please contact Dave Williams on 01952 217448

# Example of two bedroom house



## Ground floor

- Lounge at the front of the property
- Kitchen Diner (space for appliances) with access to rear garden
- Cloakroom/WC

## First floor

- Bathroom with shower over bath
- Master double bedroom
- Store cupboard in master bedroom
- Second double bedroom

### All properties

- Turf
- Allocated parking space
- Outside light fixture
- Rotary drier
- Shed
- Patio
- Secure fencing

## Room dimensions

**Kitchen**  
11.82m<sup>2</sup>

**Cloakroom**  
1.1m<sup>2</sup>

**Lounge**  
12.11m<sup>2</sup>

**Bathroom**  
4.41m<sup>2</sup>

**Bedroom one**  
11m<sup>2</sup>

**Bedroom two**  
11.27m<sup>2</sup>

# Example of three bedroom house



## Ground floor

- Cloakroom/WC
- Kitchen
- Storage cupboard off living room
- Living room with French doors to the garden

## First floor

- Landing
- Bathroom with shower above bath
- Store cupboard off bathroom
- Master double bedroom
- Second double bedroom
- Third single bedroom

## All properties

- Turf
- Allocated parking space
- Outside light fixture
- Rotary drier
- Shed
- Patio
- Secure fencing

## Room dimensions

**Kitchen**  
9.39m<sup>2</sup>

**Cloakroom**  
1.8m<sup>2</sup>

**Lounge**  
22.43m<sup>2</sup>

**Bathroom**  
4.09m<sup>2</sup>

**Bedroom one**  
10.26m<sup>2</sup>

**Bedroom two**  
11.84m<sup>2</sup>

**Bedroom three**  
4.41m<sup>2</sup>