

A Case for the Ordinary

January 7th – February 18th



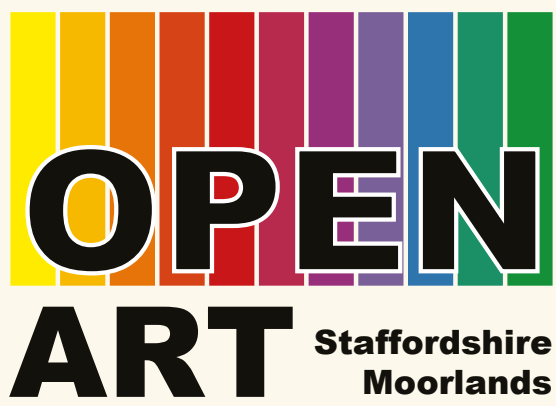
## A Case for the Ordinary: Staffordshire's Asylums and the Patient Experience

Staffordshire Archives & Heritage  
**January 7th – February 18th**

Unlocking the stories about Staffordshire's three county asylums: Stafford, Burntwood and St Edwards in Cheddleton. The exhibition explores the treatments, daily routine and social life of the staff and patients. It looks at how the asylums were built and run, and how effective they were in helping the people who were sent to them. The exhibition features letters, documents, photographs and objects from the Staffordshire Archive and Heritage Service collections, revealing the impact of the asylums on patients and their families and how these institutions changed and developed over time.

Open Art

May 20th – June 24th



## Open Art

The Nicholson Art Gallery  
**May 20th – June 24th**

The Staffordshire Moorlands Open Art Exhibition is a showcase for the often otherwise unseen talents of local artists and a popular annual event, organised as part of the Leek Arts Festival.

Artists of all genres are welcome to enter their work, please email us for an entry form: [tourism@staffsmoorlands.gov.uk](mailto:tourism@staffsmoorlands.gov.uk)

A Celebration of Light and Form

February 25th – April 1st



## A Celebration of Light and Form

Society of Staffordshire Artists  
**February 25th – April 1st**

Founded in 1933, the Society of Staffordshire Artists are some of the best known and well respected names in the Staffordshire art world. It encourages artists to develop and promote their work on a variety of different levels. The current theme is a further attempt to exemplify the qualities of colour and texture within the context of shapes and forms, where the subject material is enhanced or altered by the power of light affecting these elements, and thus directing or exemplifying the intrinsic effect of the final composition or painting.

Inspired by Nature

July 1st – August 5th



## Inspired by Nature

**July 1st – August 5th**

Louise Adams, Mark Delf, Andrea Durrant and Jane James; four visual artists linked by friendship, place and a shared interest in nature. They explore their own directions as well enjoying working alongside each other; from observing and drawing wildflowers round a table to painting outside in the landscape.

50 Years On

April 8th – May 13th



## 50 Years On

Leek School of Art Alumni Exhibition  
**April 8th – May 13th**

Tim Diggles, Kevin Millward, John Pointon and Louise Whittles completed their time at Leek School of Art and Crafts in 1973. Each have taken very different paths and are still creating work. To celebrate this landmark they have come together to exhibit some of their work from the past few years. For all four their time at Leek had an important and influential role in their lives and they value the high standards set by the lecturers who taught and guided them.

In a Split Second

August 12th – September 16th



## In a Split Second

Images from Leek Photographic Club  
**August 12th – September 16th**

Explore the talent and creativity of the Leek Photographic Club's members, in this exciting exhibition of over 60 photographic prints. The photographs cover a diverse range including natural history, landscape, close-up, portraiture, street photography and fine art. This is a powerful exhibition that demonstrates the breadth of contemporary image-making and storytelling by local photographers. Alongside the images, the exhibition will also play host to talks and workshops coordinated by the photographers themselves. The exhibition is sponsored by Petrofer UK.



Kaleidoscope – Threadmill

September 23rd – November 4th



Leek School of Art

November 11th – December 30th



The home of the  
Tourist Information Centre



## Kaleidoscope – Threadmill

An Exploration of Colour, Texture and Pattern  
**September 23rd – November 4th**

Threadmill, a group of fifteen textile and mixed media artists. The work for this exhibition will be developed from the study and influence of the Arts and Craft Movement who, together with the Leek Embroidery Society, reacted against the mechanisation and mass production brought about by the industrial revolution, but instead chose to celebrate the attention of design in decorative arts and embroidery.

## Leek School of Art

The BA (Honours) Creative Art & Design Practice  
Degree Show 2023  
**November 11th – December 30th**

This exciting exhibition showcases the talent and creativity from the BA (Honours) Creative Art & Design Practice, validated by the University of Derby. The diverse range of work on display shows the high level of professionalism, originality and imagination of the students and demonstrates their entrepreneurial expertise.

Leek School of Art is steeped in art and design history dating back to 1868, pictured is one of The School of Art's Victorian Bruccianis plaster casts (Roman 1st-2nd C 'Invitation to the Dance').



**Staffordshire Moorlands  
Tourist Information Centre**

[www.staffsmoorlands.gov.uk](http://www.staffsmoorlands.gov.uk)  
E: [tourism@staffsmoorlands.gov.uk](mailto:tourism@staffsmoorlands.gov.uk)

**Open Monday - Saturday 10am - 4pm. Last admission 3.30pm.  
Closed Sundays and Bank Holidays.  
Tel: 01538 395530**

Nicholson Institute, Stockwell Street, Leek,  
Staffordshire Moorlands, ST13 6DW.

We sell a wide range of books, maps, walking and cycling information, souvenirs and local crafts; tickets for local theatres, shows and events; local travel information and ticketing service for National Express.

How to contact us



**Telephone: 01538 395530**

Email: [tourism@staffsmoorlands.gov.uk](mailto:tourism@staffsmoorlands.gov.uk)

[www.staffsmoorlands.gov.uk](http://www.staffsmoorlands.gov.uk)



StaffordshireMoorlandsTourism

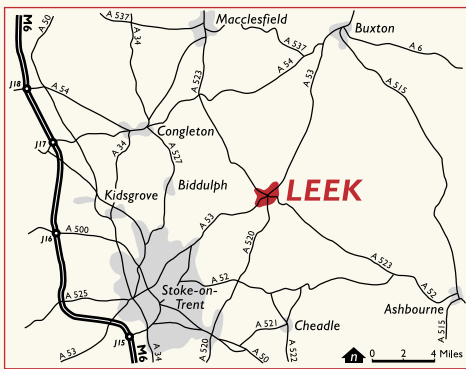


@StaffsTourism

The Nicholson Museum & Art Gallery, Nicholson  
Institute, Stockwell Street, Leek, Staffordshire  
Moorlands, ST13 6DW.

**Opening Times:** Monday to Saturday 10am to 4pm,  
(last admission 3.30pm). Closed Sundays and Bank  
Holidays.

Free admission.



How to find us



**STAFFORDSHIRE  
moorlands  
DISTRICT COUNCIL**  
ACHIEVING EXCELLENCE

## What's On?

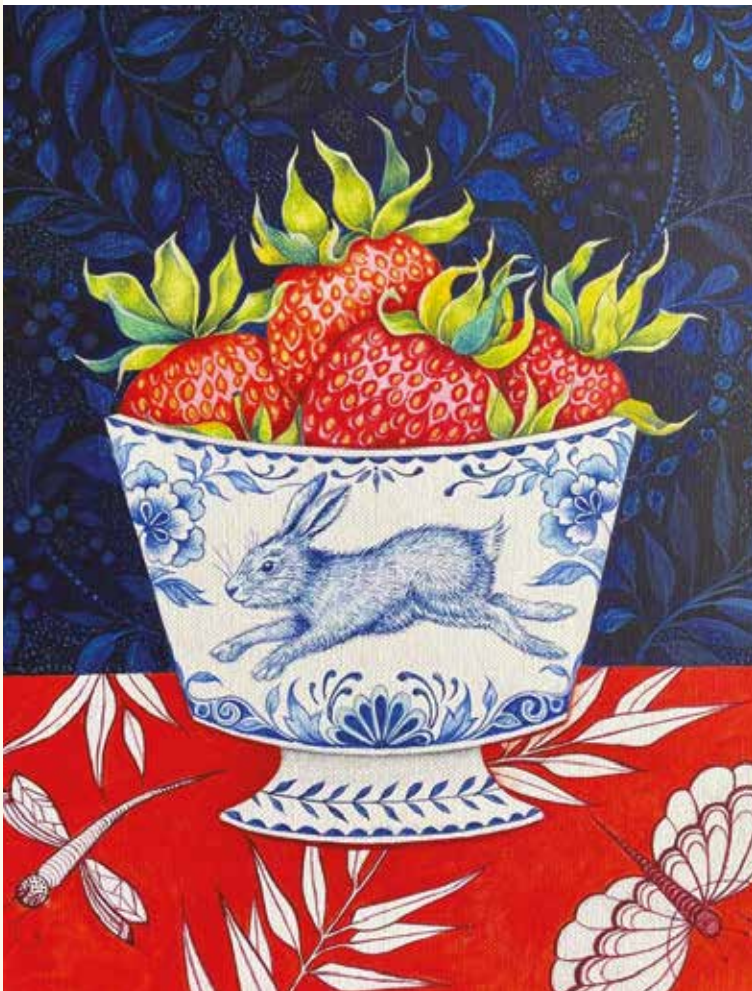


Leek, Staffordshire Moorlands, ST13 6DW



**The  
Nicholson  
Museum &  
Art Gallery**

## Events & Exhibitions Programme 2023



[www.staffsmoorlands.gov.uk](http://www.staffsmoorlands.gov.uk)