

Welcome to Ladderedge Country Park

What to see and when

March-May woodland flowers and birds

May-August wildflowers and insects

September-November fungi and autumn colours

October-February wintering birds

Moorlands District Council and turned into a country park in 1990. The park provides a diverse range of habitats to explore and wildlife to see and enjoys stunning views over Leek and the Roaches into the Peak District.

Just 2km from Leek town centre, Ladderedge Country Park was once part of an area known as Ladderedge Common, it was then farmed before being bought by Staffordshire



Recreation

There are three walks around the park:

Meadow walk - an easy 20 minute stroll around the lower meadow

Habitat walk - a slightly longer route that takes in all of the habitats that Ladderedge has to offer and does include a hill

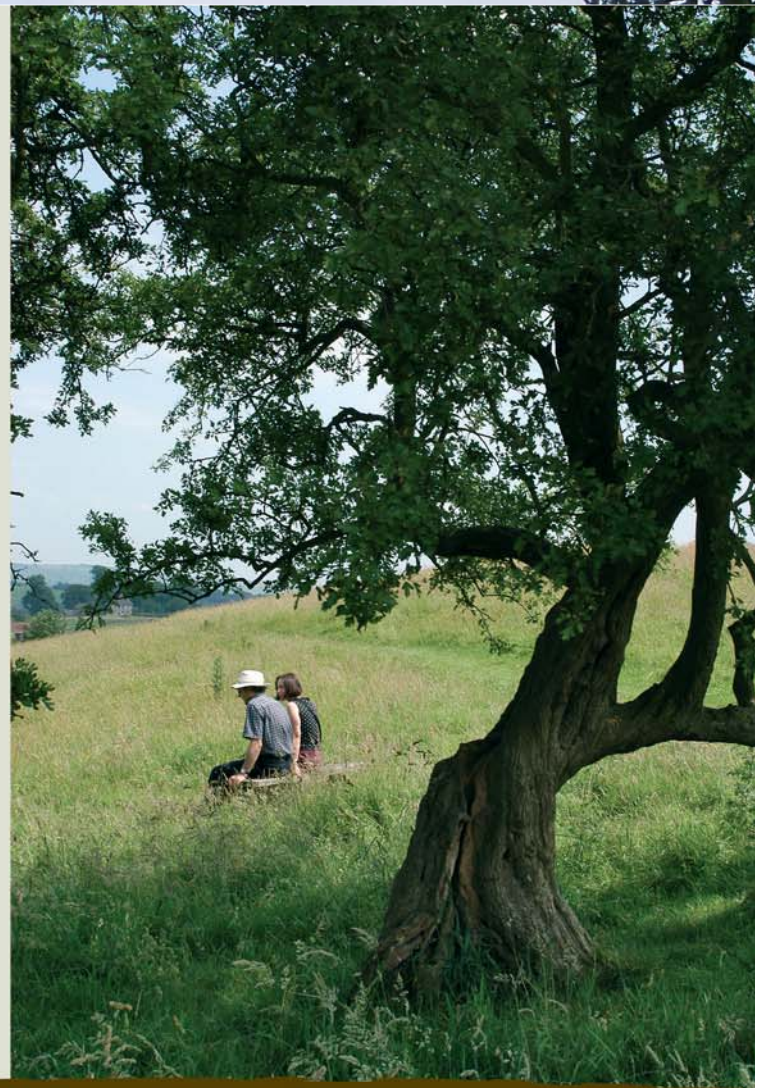
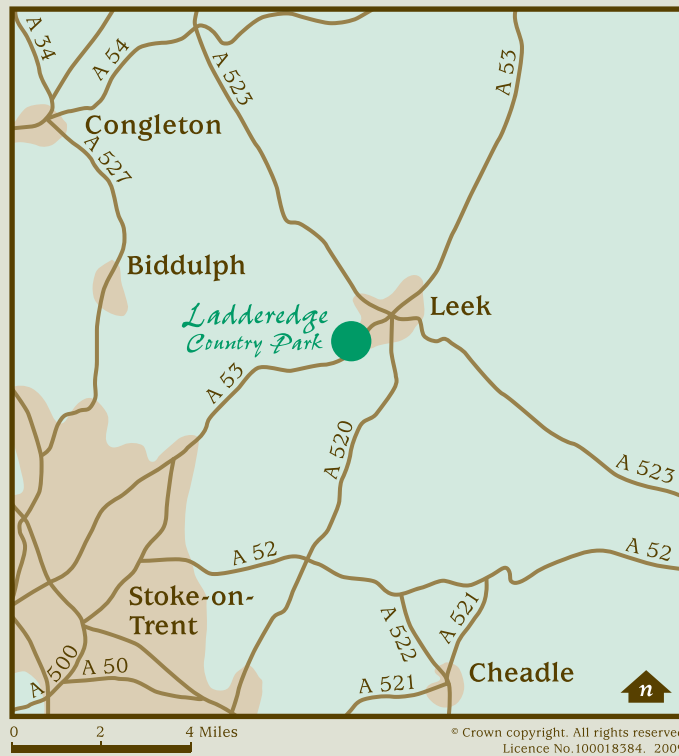
Woodland walk - this route takes approximately an hour and will take you along the canal feeder and up through the ancient woodland before strolling through grasslands

Three longer self-guided walks: The Longsdon Walk, Leek Landscapes and The Canal Walk link the park with the surrounding countryside.

Walks leaflets and orienteering packs can be purchased from Leek TIC and Ladderedge News & Stores. The walks leaflet can also be downloaded from the website www.staffsmoorlands.gov.uk/countryside.

Directions

Ladderedge Country Park is fifteen minutes walk from the town centre. Accessible by public transport, with bus routes 18 & 118 stopping close by.



The Country Park also offers orienteering courses, to test your map reading skills. There are three levels, suitable for individuals, families and groups.



STAFFORDSHIRE
moorlands
DISTRICT COUNCIL
ACHIEVING EXCELLENCE



For more information on this and other sites please contact:
Parks & Countryside Service,
Staffordshire Moorlands District Council, Moorlands House,
Stockwell Street, Leek, Staffordshire, ST13 6HQ
Tel 0845 605 3010
Contact us at www.staffsmoorlands.gov.uk/contact
www.staffsmoorlands.gov.uk/countryside
P0052/2000

Ladderedge Country Park, Leek

Discover 28 ha of fields,
wood and wetland

STAFFORDSHIRE
moorlands
DISTRICT COUNCIL
ACHIEVING EXCELLENCE

