

---



# Stage One Report

Development Capacity Study Update

Staffordshire Moorlands District  
Council

23 March 2011

## Stage One Report

Development Capacity Study Update

Staffordshire Moorlands District Council

This document has been issued and amended as follows:

Version	Date	Description	Created by	Verified by	Approved by
1a	19/11/10	Draft	Chris Harding		
2a	23/03/11	Final with Client comments	Chris Harding		

## Contents

<b>1</b>	<b>Introduction</b>	<b>1</b>
1.1	About the Commission	1
1.2	Purpose	1
1.3	Aims	2
1.4	Structure of the Report	3
1.5	Notes on the Nature of the District	3
<b>2</b>	<b>Stage One Methodology</b>	<b>5</b>
2.1	Introduction	5
2.2	Gathering data on Social Infrastructure	6
2.3	Gathering data on Physical Infrastructure	12
2.4	Gathering Data on Accessibility	14
2.5	Assessment of Settlements	25
2.6	Assessment of Core Strategy Options	26
<b>3</b>	<b>Stage One Results</b>	<b>27</b>
3.1	Introduction	27
3.2	Results of Social Infrastructure Assessment	27
3.3	Results of Physical Infrastructure Assessment	30
3.4	Results of Accessibility Assessment	32
3.5	Overall Settlement Results	45

## Appendix – to be inserted

**Error! No table of contents entries found.**

# 1 Introduction

## 1.1 About the Commission

This document provides an update to the Development Capacity Study (DCS) that Staffordshire Moorlands District Council commissioned Halcrow Group Limited to undertake in 2008. The study provided part of the evidence base for the Core Strategy element of the District's Local Development Framework (LDF).

## 1.2 Purpose

The purpose of this report is to update the DCS. This is necessary because Development Plan Documents (DPDs), of which the Core Strategy is one, must be based upon a sound, justifiable evidence base. A sound evidence base ensures that the delivery of development proposed in the Core Strategy is realistic and achievable.

The DCS provides evidence on the suitability of the District's three towns and twelve large villages to take additional housing. The settlements included in the study are listed in Table 1.1 overleaf.

Stage One of the Study identifies the constraints on the future growth of each settlement imposed by inadequate access and infrastructure. Stage Two provides valuable evidence on where future investment is needed and the likely scale of this investment, with particular reference to potential housing sites identified in the Housing Land Availability Assessment.

Table 1.1: List of Settlements Included in the Study

Settlement	Parish	2001 Parish Population
Alton	Alton	1243
Biddulph & Biddulph Moor	Biddulph	19512
Brown Edge	Brown Edge	2406
Cheadle	Cheadle	12166
Upper Tean	Checkley	4248
Cheddleton	Cheddleton	5391
Endon	Endon & Stanley	3134
Blythe Bridge	Forsbrook	5008
Ipstones	Ipstones	1510
Kingsley	Kingsley	2210
Leek	Leek	19880
Waterhouses	Waterhouses	1005
Werrington & Cellarhead	Werrington	6009
Wetley Rocks	Cheddleton	1632

Wetley Rocks has been included in this update as a new settlement. Wetley Rocks did not form part of the 2008 DCS. Caverswall & Cookshill and Oakamoor have been removed from the DCS as advised by SMDC.

### 1.3 Aims

The aims of the updated study are the same as those outlined in the original brief from 2008, and are as follows:

- to examine the existing level of infrastructure and accessibility (comprising education, healthcare, community facilities, leisure services, electricity, gas and water supplies, sewerage, the highway network and public transport);

- by analysis of the above, to identify settlements with easy access to a range of infrastructure services and facilities and settlements where these facilities are not provided or are hard to reach;
- to identify the priorities and proposals of key service providers and other relevant organisations where these have implications on the future growth of the identified settlement;
- to identify the capacity of existing infrastructure services and movement corridors to accommodate future growth and to flag up what additional infrastructure is necessary to support each development option;
- to assess the developability and likely viability of larger sites identified through the Housing Land Availability Assessment.; and
- through all of the above, to provide guidance on how to ensure future development in the District takes place in the most sustainable way possible.

#### **1.4 Structure of the Report**

Chapters Two, Three and Four present the methodology and findings and conclusions. The methodology for each stage provides a step by step toolkit, in plain English, which can be used by anyone wishing to rerun the exercise in future years. The results of each step of the methodology are then provided, allowing the reader to see exactly how we came up with our findings.

#### **1.5 Notes on the Nature of the District**

We made a number of observations about the District in 2008. These are still relevant to the update, although where necessary they have been updated. These remain a key feature of our thinking throughout this report and are set out below.

Staffordshire Moorlands covers an area of 57,624 hectares and has a population of around 95,300 (2008 estimate), giving 43,396 households as of April 2007. Despite the rural nature of much of the District, around 53% of the population is based in the three towns of Leek, Biddulph and Cheadle, with a further 22% in the larger villages of Cheddleton, Endon, Werrington / Cellarhead and Blythe Bridge, located in the west of the district. The remainder is shared between 34 rural parishes. The settlements in the Study thus cover upwards of 75% of the District's population.

A third of the District lies within the Peak District National Park. Of the remainder, around 30% is Green Belt. The district has close links to neighbouring parts of Cheshire as well as to Stoke-on-Trent. Stoke on Trent provides significant employment opportunities and services and will be an important consideration when looking at social infrastructure, in particular

healthcare and further education. Around 49% of the District's working population work outside the District.

Community life is a strong and distinctive feature of the Staffordshire Moorlands. People often identify closely with their own town or village. This leads to a rich pattern of community activities and organisations; more, perhaps, than would be found in an equivalent sized suburban area. This will contribute towards the social capital enjoyed within the District but may not necessarily be reflected by the built social infrastructure.

Staffordshire Moorlands is a popular area for residents, businesses and visitors. The 2008 Sub-National Household Projections (the most up to date available at the time of writing) forecast an additional 5,150 households across the District between 2006 and 2026, which is equivalent to a net demand for an additional 5,300 units (assuming a 3% variance for vacancies). While this may not seem a large number, the rural nature of the District will have a strong bearing on where growth can take place, particularly the key issue of accessibility.

Between now and 2026, a slight rise in population is forecast from 95,300 to 100,200. The greatest rise will be in the older age group (around 10,100), while the working age group will experience a fall of around 4,700 as families leave the District to live elsewhere. The children age group will experience a fall of 400. This suggests it is younger families who will be leaving. This will have an important impact on the infrastructure needs of the District, as older people tend to be less mobile and, therefore, need more locally based services.

Most of the District is unlikely to be a target for significant large scale inward investment due to its poor transport links and the absence of major centres of further education (although new SMEs are likely to continue to be attracted). It is important that major employers like Britannia Building Society, JCB and Alton Towers are supported and encouraged to continue investing in the District. Future planning of physical infrastructure, in particular, will have an important bearing on their retention.

## 2 Stage One Methodology

### 2.1 Introduction

The aim of Stage One is to identify those settlements with the best access to social and physical infrastructure, those which are most accessible to and from each other, and those which are best connected to the nearby city of Stoke on Trent.

When Halcrow were approached about updating this report, we were advised that the methodology should remain the same as for the original work. This chapter remains broadly the same as in the original report, although it has been amended to reflect up to date circumstances as required.

The original Development Capacity Study reviewed fifteen settlements which were identified by SMDC. The built up areas of each were then plotted onto our GIS base. For the update SMDC advised that two of the settlements were not required to be revisited, Caverswall & Cookshill and Oakamoor. At the request of SMDC Wetley Rocks has been included.

Next, we agreed with the Council the categories for which we would gather information under each of the three classes. These were:

#### *Social Infrastructure*

- Education
- Healthcare
- Community / social facilities
- Leisure facilities

#### *Emergency services*

- Police
- Ambulance
- Fire Service

#### *Physical Infrastructure*

- electricity supply
- gas supply



- water supply
- sewerage

#### *Accessibility*

- public transport
- highway network

Data was gathered from a variety of sources for each of these eleven categories and our analysis of each settlement was based upon the information received. Halcrow used its existing knowledge and experience of the development process to draw up a list of relevant organisations e.g. Staffordshire County Council or the British Pipeline Agency. In most cases, information was gathered through a telephone conversation with an appropriate person at each organisation. These were supplemented by internet searches. Face to face meetings were not deemed to be needed.

The people we spoke to were asked to provide the following information:

- the existing level of service and the location of the nearest facility
- the present balance between supply and demand
- any plans for future growth, relocation or downscaling
- the expected balance of demand and supply taking into account the above

The scope and quality of information did, of course, vary between sources, so direct comparison between categories is not always possible. This is an issue inherent in this kind of exercise. The effect was most noticeable when discussing the latter two items, as these were based largely on expectations for the future and not on measured data. Even so, the information we gleaned was useful.

## **2.2 Gathering data on Social Infrastructure**

Within each of the five categories, individual facilities were identified. These are listed below:

#### *Education*

- Primary schools
- Secondary schools
- Colleges

*Healthcare*

- GP surgeries
- Dentists
- Hospitals
- Hospitals with A&E
- Optician

*Community / Social Facilities*

- Village Halls
- Post Offices
- Churches

*Leisure Facilities*

- Swimming Pools
- Sports Pitches / Playing Fields
- Libraries
- Public Parks
- Fitness Centres

*Emergency Services*

- Police Stations
- Fire Stations
- Ambulance Stations

In each case, the first question we asked was whether or not there was a particular facility present in the settlement and, if so, how many and of what type. This preliminary phase was carried out over the internet, and proved a simple way to obtain the locations of, for example, schools and leisure centres.

Once we had determined whether or not a particular facility was present, we looked into capacity, demand, future plans and expectations of future demand – these do not take into account any policy changes which may increase population growth. This research was carried out by telephone in the majority with the exception of school capacities where the ‘edubase’ website was used to determine capacity level at schools in the Staffordshire Moorlands area<sup>1</sup>.

Having gathered the data, we then assessed the facilities available to each settlement. A scoring table was prepared for each settlement, plotting the facilities against the four criteria listed in paragraph 2.1.5 above. An example of one of these tables is given in Figure 2.1 overleaf.

---

<sup>1</sup> [www.edubase.com](http://www.edubase.com)

Figure 2.1: Example of Stage One Scoring Table

Staffordshire Moorlands- Social Infrastructure Review March 2011								
Alton								
Services in Alton	Present	Level of presence	Capacity	Demand	Future Plans	Expectations of future Demand	Score	Category Rating
	Y/N	How many there are?	Number	more, equal to or less than capacity	No Change, expansion, contraction	No Change, Small Increase, large increase, Small Reduction, large reduction		
<b>Education**</b>							<b>17</b>	
Primary school	Yes	1	St. Peters CE(A) First School - 65	Less (25 places) Overall (+25)	No Change	Small Reduction	12	
Secondary School	No - nearest one is in Cheadle	3	Cheadle High School - 800 Painley Catholic High School- 826 Ryecroft CofE Middle School- 940	More (+ 3 places) More (+200) More (+120) Overall (+420)	No Change	Small Reduction	0	
College	No - 6th form in Cheadle and FE in Leek and Stoke		Moorlands VI Form Centre - 400 Leek College of Further Education	Less	No Change	Small Reduction	5	
<b>Health</b>							<b>12</b>	
GP surgery/Medical Centre	Yes	1 Practice- 1 GP	2,000 patients	Less- accepting new patients	No Change	Small Increase	4	
Dentists	No - nearest one is in Cheadle	2 at Cheadle	One accepting NHS patients	Less- accepting new patients	No Change	Small Increase	4	
Hospital	No	Nearest is Cheadle Hospital (4 Miles)	3 Community Hospitals- serve the 210,000 population. Includes Staffordshire Moorlands and Newcastle Under Lyme	Equal	Ward improvements at Cheadle Hospital	Small Increase	3	
Hospital with A & E	No	Nearest is University Hospital of North Staffordshire	1,300 beds and 680,000 patient visits. At limit	More	£300 million investment, new hospital on City General site, will provide an additional 25% of current hospital size	Increase	0	
Opticians	No - nearest in Cheadle	1 - Nuvette Optician	2000/optician	At capacity but still accepts new patients	No Change	No Change	1	
<b>Community/Social Facilities</b>							<b>15</b>	
Village hall	Yes	1		Less - on average 1 to 2 bookings per week. Various activities	The hall has undergone considerable improvements in recent years	No Change	4	
Post Office	Yes - Smithy Bank, Alton, Stoke on Trent, Staffordshire, ST10 4AA	1		Less	No Change	Small Reduction	8	
Churches	Yes	3 - St Johns Church, Methodist Church, St Peters CE Church		Less	No Change	No Change	3	
<b>Leisure Facilities</b>							<b>6</b>	
Swimming Pools	No	Nearest in Cheadle (South Moorlands Leisure Centre Approx 3.69 miles)		Less	No Change	Small Increase	2	
Sports pitches/Playing field	Yes	1 at Alton Village Hall		More	Hurst Lane playing fields need improving	Small Increase	0	
Library	Yes	Has a mobile library service		Equal	May expand mobile service	No Change	2	
Public Parks	No	Nearest in Cheadle	N/A	More	Create network of green corridors linking natural open space with wider countryside and key settlements	Small Increase	2	
Fitness Centres (gyms)	No	Nearest in Cheadle	N/A	More	No Change	Small Increase	0	
<b>Emergency Services</b>							<b>6</b>	
Police	Served by Staffordshire Police (Moorlands East NPU Division)	1 - Based at Cheadle Police Station (approx 3.99 miles)		Equal	No Change	No Change	2	
Fire	Served by Staffordshire Fire and Rescue Service	Nearest Station in Cheadle		More	10-15 yr plan, PFI 1 deliver 10 new stations in Staffordshire. PFI 2 refurbish 10-12 in Staffordshire (one to include Leek). Refurbish existing stations, (Cheadle completed, Ixstone is a relatively new building, other three to be refurbished in the next 2-3 yrs)	No Change	2	
Ambulance	Served by Staffordshire ambulance service (merged with West Midlands Ambulance Service in Oct 2007) nearest is in Cheadle (approx 4.7 miles)	Nearest Station in Cheadle		Equal	No - relocating station in Leek but no plans to increase number of stations or number of employees	Small Increase (tends to be seasonal, ie busier at Christmas)	2	
							<b>56</b>	

The level of presence and the capacity of each facility were recorded as simple statements of fact. The demand, future plans and expectations of future demand, however, were generated from the opinions of the people consulted. Because opinions cannot be recorded quantitatively, we used a red / amber / green rating to rate them relative to each other. Where our contacts believed that current demand outstripped supply the facility was rated red, where supply and demand were in balance the rating was amber and where supply more than catered for demand, the rating was green.

Future plans were rated in much the same way. Expansion of a service received a green rating, no change an amber rating and a loss of service a red rating. Expectation of future demand was then calculated by combining present demand with future plans, taking on board any views expressed by the organisations. For example, if a town had a shortage of doctors but a new surgery was planned, it would score red on present demand, green for future plans and amber for future demand, as the new surgery would most likely make up for the present shortfall.

A weighted score was then applied to the expectation of future demand for each facility. A total score of 100 was given for the green ratings, 50 for the amber and 0 for the red. These scores were next broken down by category and then by facility. In setting the green scores, we considered which facilities were most important to residents. Education and healthcare were considered the most important and accounted for half the points between them.

To set the amber scores, we considered to what extent the lack of a facility should be considered a constraint, and how easy it would be to overcome such a constraint. For this reason, the amber score was not always half the green score.

All scores were agreed between the client and consultant. While subjective, they do demonstrate the relative importance of each facility. A full list of scores for the social infrastructure class is provided in Table 2.1 overleaf.

It is important to bear in mind that the purpose of this exercise is to award a red, amber or green rating to each settlement rather than a numerical score. For this reason, the scores for each category are expressed as ranges rather than discrete values. To calculate these ranges, the highest possible score for each category was worked out by adding together the green scores for its constituent facilities (e.g. for education  $12 + 8 + 5 = 25$ ). This was then split into three roughly equal ranges (e.g. for education the ranges were 0 - 8, 9 - 16 and 17 - 25).

The category ratings were determined as follows. Each settlement was rated red, amber or green for each facility and the requisite score awarded. These were then totalled to give a score for each category. The appropriate rating

from Table 2.1 for that score was then awarded. A worked example is given overleaf.

To work out the overall rating for each settlement, the category scores were totalled and the highest and lowest totals identified. The difference between highest and lowest was then split into three roughly equal ranges and the ratings awarded on the basis of these. This ensured a reasonably even split of red, amber and green settlements. Again, a worked example is given overleaf.

*Table 2.1: Scoring System for Social Infrastructure Categories and Facilities*

Category	Facility	Red	Amber	Green
	Primary School	0	4	12
	Secondary School	0	4	8
	College	0	3	5
<b>Education</b>		<b>0 - 8</b>	<b>9-16</b>	<b>17-25</b>
	GP Surgery	0	4	10
	Dentist	0	4	7
	Hospital	0	3	6
	Hospital with A&E	0	3	5
	Optician	0	1	2
<b>Healthcare</b>		<b>0 - 10</b>	<b>11-20</b>	<b>21 - 30</b>
	Village Hall	0	2	4
	Post Office	0	4	8
	Church	0	2	3
<b>Community &amp; Social</b>		<b>0 - 5</b>	<b>6-10</b>	<b>11-15</b>
	Swimming Pool	0	2	3
	Sports Pitch / Playing Field	0	2	6
	Library	0	3	5
	Public	0	2	4
	Fitness Centre	2	1	2
<b>Leisure Facilities</b>		<b>0 - 6</b>	<b>7-13</b>	<b>14-20</b>
	Police	0	2	4
	Fire	0	2	3
	Ambulance	0	2	3
<b>Emergency Services</b>		<b>0 - 3</b>	<b>4-6</b>	<b>7-10</b>

**Example of Category Rating:** Settlement X is rated amber for a primary school, green for a secondary school and red for a college. This gives it a total score of 12 for the education category (4 points + 8 points + 0 points). Table 2.1 shows this score to lie in the amber range. Settlement X's education rating is thus amber.

**Example of Overall Rating:** Settlement X scores 72 points overall. The lowest scoring settlement scores 42 and the highest 80. This gives a spread of 39 values (NB both 42 and 80 are included so the spread is one more than the difference). Splitting this spread into thirds gives the following ranges: Red 42-54, Amber 55-67, Green 68-80. Settlement X's overall rating is thus green.

### 2.3 Gathering data on Physical Infrastructure

Information on physical infrastructure was gathered and analysed using the Service Provider's available data or web-based network systems.

Information on electricity supply was obtained using Drawing No. MAPS-040-061 Issue B dated 13/10/09 entitled 'Introduction Small Scale Geographic Diagram' contained within the Central Networks document 'Long Term Development Statement, Central Network West, 2009'.

This drawing shows the primary (high voltage) cables and infrastructure within the District. This gives information on the capacities of power lines and substations.

The locations of the settlements were checked and the closest available electricity supply for each was estimated, particularly the nearest 33kV supply (substation at best, if not then nearest overhead/underground supply).

Each settlement was rated between 1 to 10 in accordance with the proximity of 33kV substations, the extent of 33kV over ground lines or underground cables present and the extent of lower capacity cables present. 1 indicated the scarcity whilst 10 indicated the sufficiency of appropriate electricity supply.

Settlements rated between 1-4 were classified as red, those rated between 5-7 were classified as amber and those rated between 8-10 were classified as green.

Information on gas supply was obtained from data disks available to Halcrow of National Grid's Network Systems.

The data indicates the gas mains infrastructure including Intermediate Pressure (IP), Medium Pressure (MP) and Low Pressure (LP) mains and their sizes.

By analysing the area around the settlements, the general extent of the gas mains and their types serving the area was determined.

Each settlement was rated between 1 to 10 in accordance with the extent, proximity and size of IP, MP and LP gas mains existing in the area. 1 indicated the scarcity of gas infrastructure whilst 10 indicated the sufficiency of the gas infrastructure.

Settlements rated between 1-4 were classified as red, those rated between 5-7 were classified as amber and those rated between 8-10 were classified as green.

Information on sewerage was obtained using historical data from Severn Trent for this District. It has been assumed that this data has not changed significantly.

Their network shows the sewerage drainage runs and infrastructure within the District.

The locations of the settlements were checked and the closest available sewerage system for each was determined,

Each settlement was rated between 1 to 10 in accordance with the proximity of appropriate sewerage system. 1 indicated the scarcity whilst 10 indicated the sufficiency of appropriate sewerage network.

Settlements rated between 1-4 were classified as red, those rated between 5-7 were classified as amber and those rated between 8-10 were classified as green.

Information on potable water supply was obtained using latest available data from Severn Trent for this District.

Their network shows the water mains within the District. This gives information on the sizes and type of mains.

The main arterial routes into the settlements were checked since this is usually where the water mains are located. Obvious large bore water mains were identified.

Each settlement was rated between 1 to 10 in accordance with the obvious large bore water mains present in and around the area. 1 indicated the scarcity whilst 10 indicated the sufficiency of appropriate sewerage network.

The ratings were based on the assumptions that sufficient capacity existed in these large bore water mains.



Settlements rated between 1-4 were classified as red, those rated between 5-7 were classified as amber and those rated between 8-10 were classified as green.

Table 2.2: Scoring System for Physical Infrastructure Categories

Category	Red	Amber	Green
Electricity	-	10	33
Gas	0	15	33
Water Supply	-	-	17
Sewerage	-	-	17
<b>Physical Infrastructure</b>	<b>0-70</b>	<b>70-85</b>	<b>85-100</b>

## 2.4 Gathering Data on Accessibility

The work completed revises the accessibility analysis undertaken in 2008 using updated public transport data.

The first task was to map out the network, making headline observations on its characteristics. This involved looking individually at the bus networks serving Biddulph/Biddulph Moor, Cheadle and Leek, together with other key services.

The second task was to measure and identify, of the fourteen settlements, which were most suitable for development. The aim to identify areas that could accommodate growth and those where improvements would be needed before growth could be considered.

At the core of the accessibility calculation was Accession and GIS software, which enables us to assess each of these settlements. Public transport data was sourced from the National Public Transport Data Repository ([www.nptdr.org.uk](http://www.nptdr.org.uk)), based upon the most recent data available.

By completing the second task it has enabled us to provide an index showing the sustainability of each settlement from a transport perspective. Our accessibility analysis combined the data on public transport and walking / cycling referred to above with connectivity by road, this being calculated in terms of distance and number of main road corridors.

To the west of the study area is the regional centre of Stoke-on-Trent. For accessibility purposes this is defined as Hanley. We have also identified a number of key towns surrounding the study area. These comprise (clockwise from north) Macclesfield, Buxton, Ashbourne, Uttoxeter, Stone, Kidsgrove and Congleton.

The study area is largely rural in nature, with urban pockets to the west. Figure 2.2 shows, from data sourced from Office of National Statistics, the 'Urban and Rural Classification 2004', together with the locations of the settlements.

Figure 2.2: Study area composition (Urban / Rural)

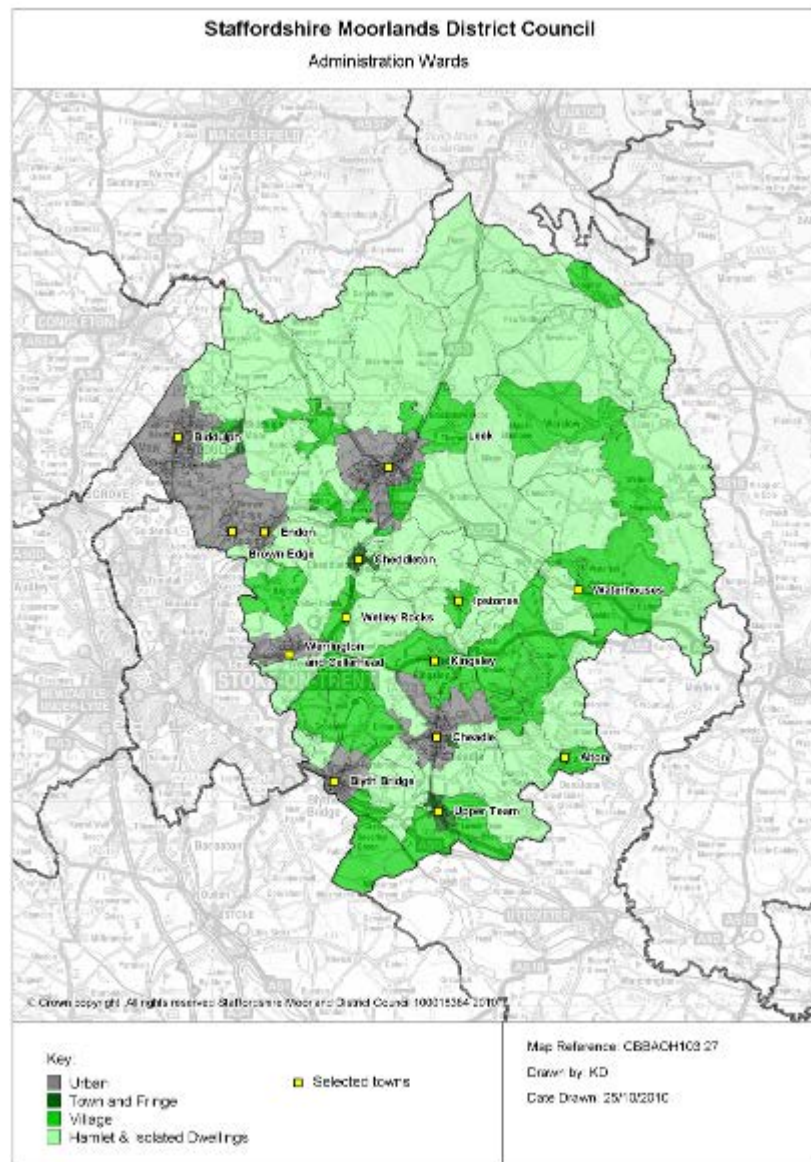
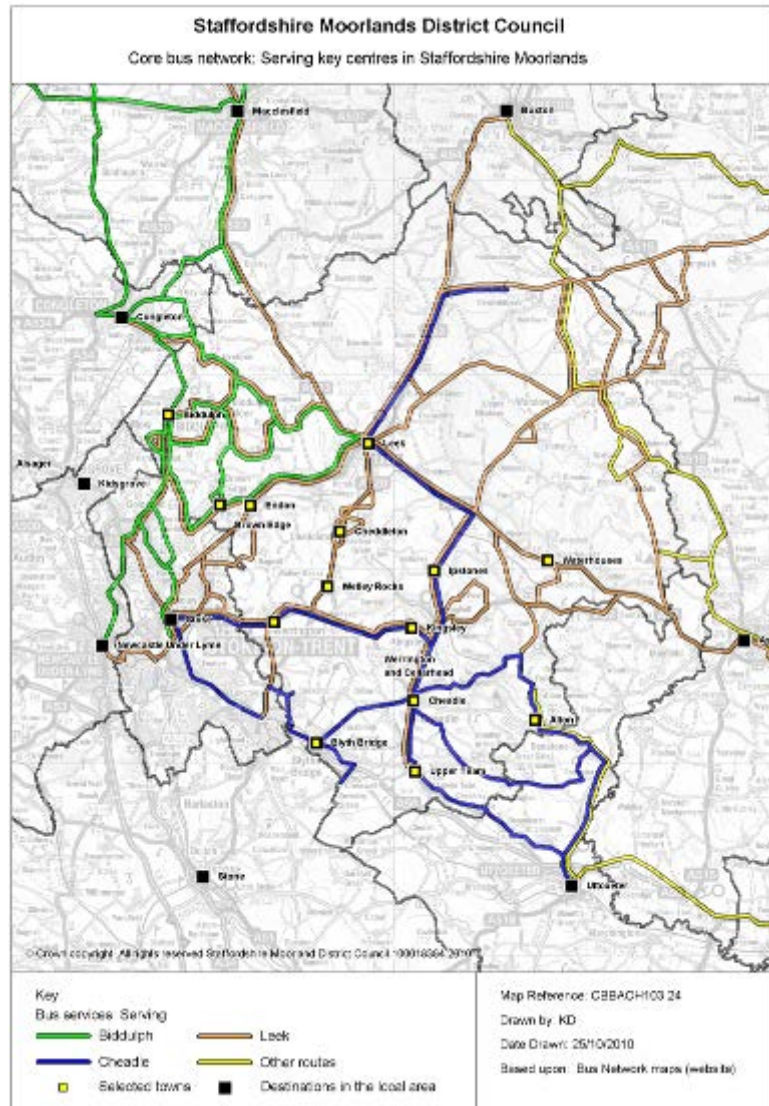


Figure 2.3 shows the bus network in the study area, highlighting the services that call at Biddulph, Cheadle, Leek Hanley and the other key towns mentioned in 2.4.5 above. The map shows that all settlements have bus connections to one or more of the larger settlements.

As noted in the initial work undertaken, Figure 2.3 also shows interesting patterns in terms of the bus networks radiating from each of the three centres:

- from Biddulph, the bus network penetrates the northern part of the study area, serving Stoke and external destinations such as Macclesfield and Stockport
- from Cheadle, bus services are typically to and from the south, serving Stoke and Uttoxeter
- from Leek, the bus network is more extensive, with links to most parts of the District and to many of the key towns surrounding the study area.

Figure 2.3: Bus Network in the Staffordshire Moorlands



To accompany our analysis, a series of maps have been produced. These may be found in Appendix Two. In addition, Chapter Three also reports on an updated accessibility tool (developed in MS Excel) that is designed to help officers of Staffordshire Moorlands District Council to make informed decisions based on Public Transport Accessibility. The tool links directly to the mapped outputs.

The accessibility audit has three separate calculations, two of which are public transport (PT) access and one road access. For the purposes of this report, the PT accessibility audits are defined as 'Local' and 'Network' Accessibility.

### *Accessibility by Public Transport*

'Local' accessibility is simply a calculation of bus frequencies by time band (based upon bus services calling at one or more local parish settlements) and by distance from stop.

'Network' access is a calculation of travel time from an origin point (home) to the nearest attractor, such as a GP surgery or school. For this study, three destination types have been used to measure network access, these being:

- to the nearest town or village centre;
- to a larger centre within or without the District (where the parish population is greater than 5,000); and
- to the regional centre of Hanley.

### *Local accessibility calculation*

Analysis is based on the following inputs:

- PT Timetable information (source: ATCO-CIF data Oct 2009)
- Bus stop locations (source: NAPTAN Oct 2009)
- Urban Rural Classifications 2004, as shown in figure 2.2

ATCO-CIF data was downloaded from the 'National Public Transport Data Repository' website (NPTDR), hosted by Thales. This data consists of bus timetable information, including:

- Where bus services stop
- What time these services stop
- Which days of week these services operate

The data was manipulated using MapInfo and SPSS to show, at bus stop level, the number of services calling at each stop for defined time bands<sup>2</sup>.

---

<sup>2</sup> These time bands are defined as 'Monday to Friday AM Peak (0730-0930)', 'Monday to Friday Off-Peak (0930-1600)', 'Monday to Friday PM Peak (1600-1830)' and 'Monday to Friday Evening (1800-2300)'.

Bus services which do not call within half a mile of at least one listed settlement centre have been removed from the analysis (this was done using GIS and catchment analysis).

The criteria used to calculate the local accessibility are shown below:

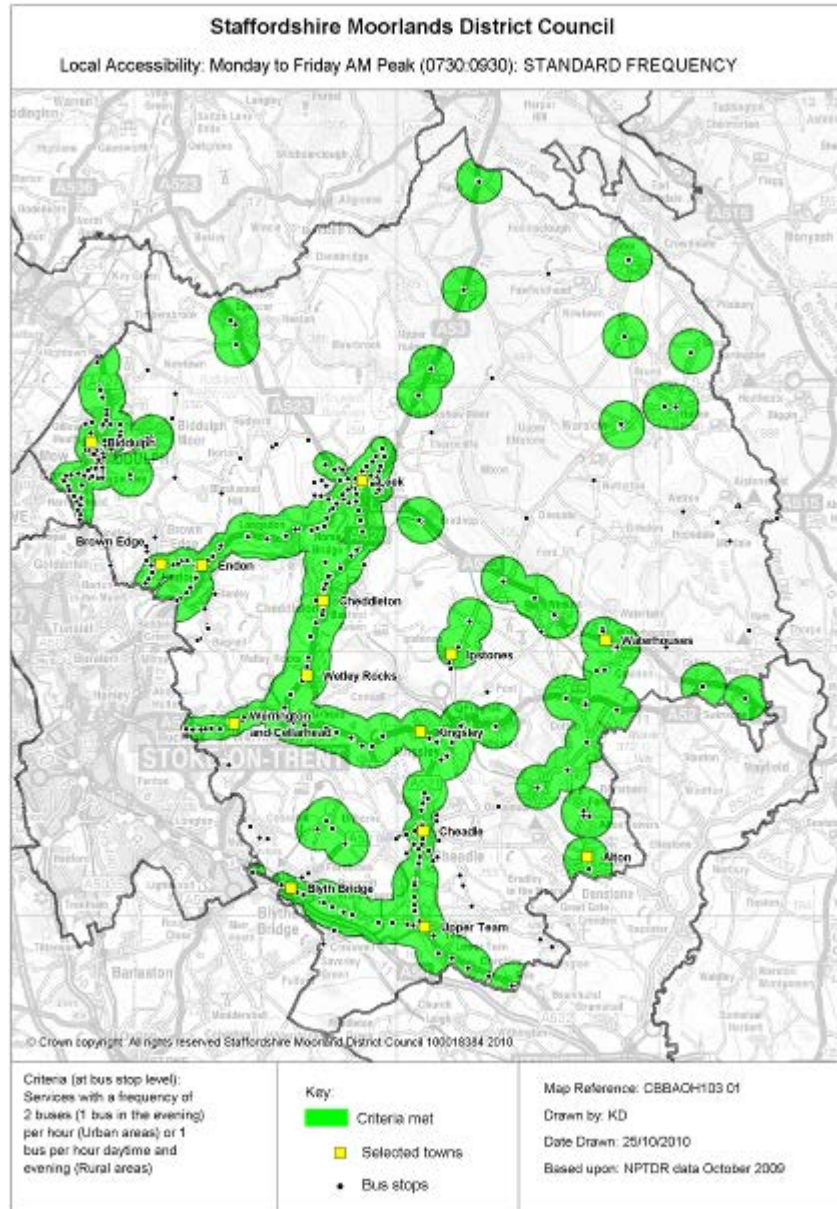
- Criterion 1: Morning Peak (7:30am-9:30am) two buses per hour in an urban area or one bus per hour in a rural area
- Criterion 2: Off Peak (9:30am-4:00pm) frequency as Morning Peak
- Criterion 3: Afternoon Peak (4:00pm-6:30pm) frequency as Morning Peak
- Criterion 4: Evening (6:30pm-11:00pm) one bus per hour in both areas

Each criterion defines the required frequency of services needed in that defined time band. If the criterion is matched, a catchment area of 400m (in an urban area) or 800m (in a rural area) is drawn.

The more criteria each settlement matches, the more locally accessible it is and the higher its resulting score. As an example, figure 2.4 shows an example map of local accessibility in the morning peak time band (additional maps show access in the other three time periods).



Figure 2.4: Local Accessibility in the Morning Peak



*Network accessibility calculation*

Network accessibility has been calculated using Accession software. The inputs to the software are the public transport network from October 2009 (ATCO-CIF repository), a road network supplied by the District Council and an origin grid of 100m. In addition, a series of destinations have been used as noted in paragraph 2.4.13.

For each destination, four time specific calculations have been made (see time bands defined in paragraph 2.4.17). Access time is calculated from the origins to the destinations for all time bands, except for the afternoon peak, in which access time is measured from the destination to the origins (the reason for this is that in the afternoon peak the bulk of trips are workers travelling home).

To support this study, guidance has been sought from the Department of Transport (DfT). This is attached in Appendix Three. For the purposes of this analysis, the following indicators have been used for access by PT and on foot:

Access to the nearest town or village centre (proxy for access to local services) - when an origin is within 15 minutes (optimum) or 30 minutes (maximum)

Access to larger centres (proxy for access to market town services) - when an origin is within 15 minutes or 30 minutes

Access to the regional centre of Hanley (proxy for access to a major destination) - when an origin is within 30 minutes or 60 minutes

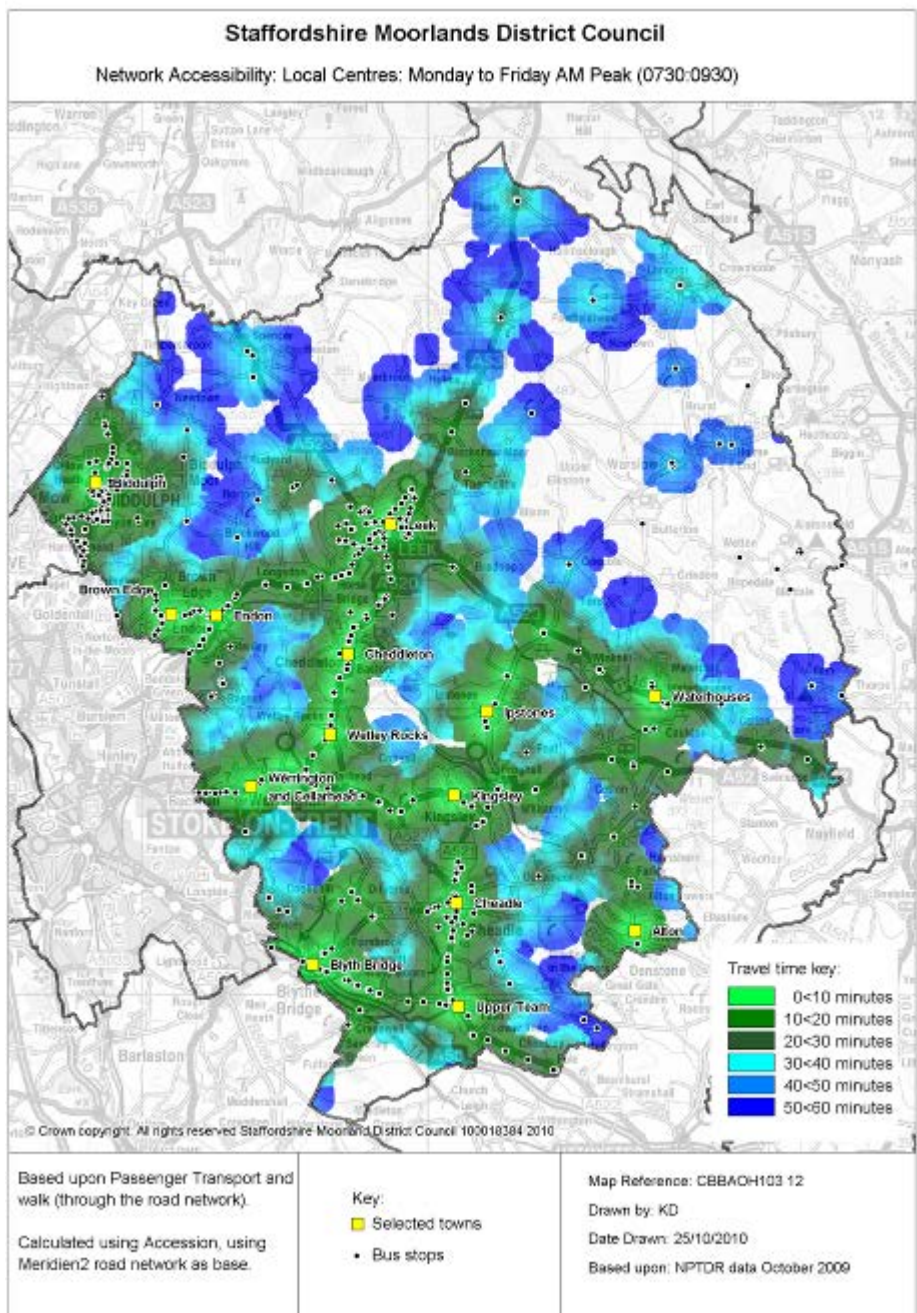
An example is given in figure 2.5 showing access to the fourteen local centres in the morning peak. Areas coloured green are within thirty minutes' travel time, as set out in 2.4.22 above.

### *Road Connectivity*

Accessibility by road has been calculated by measuring the distance to the nearest point of access to the 'A' road network from the point of origin. If the origin lies within half a mile the access is considered good (green). Between half a mile and one mile is considered reasonable (amber) and more than one mile poor (red). In this instance, accessibility does not include travel time to any particular destination. The number of 'A' roads serving each settlement has also been considered. A settlement not on the 'A' road network is rated red, a settlement served by one road is rated amber and a settlement served by more than one is green.



Figure 2.5: Network Access to the Nearest Town or Village Centre in the Morning Peak



### *Accessibility Scoring*

In terms of local accessibility, we have previously made mention of an accessibility tool, the purpose of which is to analyse (at an accuracy of 100m) the accessibility of given grid co-ordinates. In essence, a user of the tool can input grid co-ordinates into the tool and will gain an understanding of how accessible that area is by public transport. This stage of the methodology discusses how the GIS elements later on form the basis of the tool.

The values from the accessibility calculations have been added to the grid, so that for each separate 100m grid there is a record for access to the nearest local centre, the nearest larger centre and the regional centre of Stoke for each of the four time bands. For local access this record is a yes/no answer dependant upon whether the grid square lies within or without the catchment area. For scoring purposes, 'yes' means green and 'no' means red.

For network access the grid square contains a time value based upon the relevant isochrone (see Figure 2.5 above for an example of an isochrone map). To fit with other elements of the scoring system, these values have been converted into scores of 0, 1 or 2. Where the grid is within the optimum value, a 'green' score of two is awarded (for example, a grid square ten minutes from its nearest local centre). If the grid square lies between the optimum and maximum values, an 'amber' score of one is awarded. If the grid square falls without the maximum time allocation (for example, a grid square 70 minutes from the regional centre) no score is awarded.

In summary, then, the local accessibility score is simply the sum of the scores for the four time bands, giving a maximum of four points. For network accessibility, scores for the four time bands are calculated for each of the three destination types, giving twelve values and a maximum of 24 points.

The full list of available scores is shown in Table 2.4 overleaf.

Table 2.4: Scoring System for Accessibility Categories

Category	Criterion	Green	Amber	Red
	Morning peak service available	1	-	-
	Off peak service available	1	-	-
	Afternoon peak service available	1	-	-
	Evening service available	1	-	-
<b>Local Accessibility</b>	<b>Sub total</b>	<b>4</b>	<b>-</b>	<b>-</b>
	Access to local centre in morning peak	2	1	0
	Access to local centre off peak	2	1	0
	Access to local centre in afternoon peak	2	1	0
	Access to local centre in evening period	2	1	0
	Access to larger centre in morning peak	2	1	0
	Access to larger centre off peak	2	1	0
	Access to larger centre in afternoon peak	2	1	0
	Access to larger centre in evening period	2	1	0
	Access to regional centre in morning peak	2	1	0
	Access to regional centre off peak	2	1	0
	Access to regional centre in afternoon peak	2	1	0
	Access to regional centre in evening period	2	1	0
<b>Network Accessibility</b>	<b>Sub total</b>	<b>24</b>	<b>12</b>	<b>0</b>
	Number of 'A' roads serving settlement	2	1	0
	Distance from 'A' road network	2	1	0
	Distance from regional centre	2	1	0
<b>Road Connectivity</b>	<b>Sub total</b>	<b>6</b>	<b>3</b>	<b>0</b>

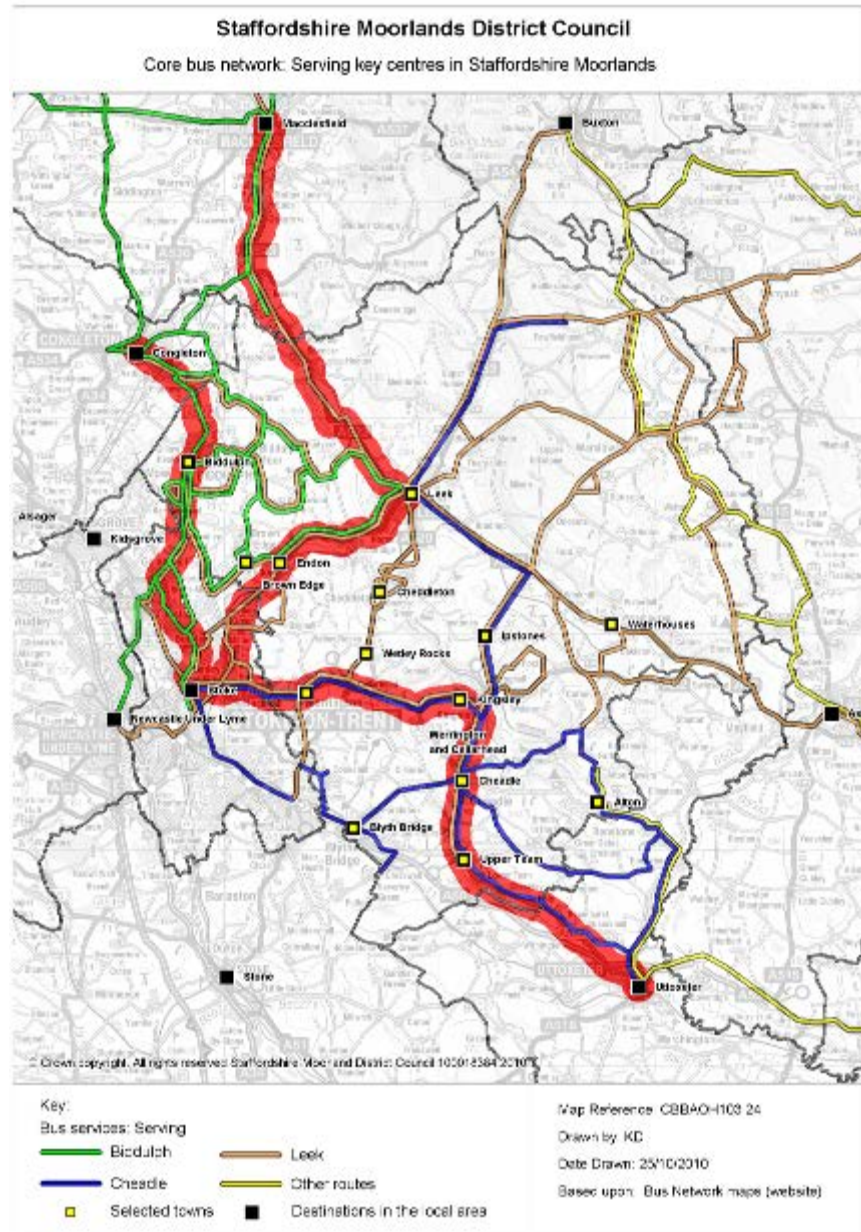
#### *Future Public Transport improvements in the area*

To understand future plans for public transport in the study area, we examined the bus strategy from the Staffordshire Local Transport Plan (Annex E of LTP2). Details of this may be found in Appendix Four.

The bus strategy gives emphasis on an intra-urban network linking key settlements such as Biddulph, Leek and Cheadle to centres such as Hanley, Macclesfield and Uttoxeter.

Figure 2.6 shows the local bus network together with the intra-urban bus network, highlighting the roles of Biddulph, Cheadle and Leek as key destinations on routes between Hanley and Congleton, Macclesfield and Uttoxeter, respectively.

Figure 2.6: Local bus network with the Intra-Urban network



## 2.5 Assessment of Settlements

Having established how each settlement fared in relation to the three classes of social infrastructure, physical infrastructure and accessibility, a summary table was prepared showing the red, amber or green rating achieved by each settlement for each class. Overall ratings were not given. The numeric

scores used to generate the ratings were not shown in these tables; they may be found in the appendices.

These ratings enabled a hierarchy of settlements to be established within the District for each infrastructure type. The Core Strategy Options were then assessed against these hierarchies.

## **2.6 Assessment of Core Strategy Options**

In the original Development Capacity Study, once we had ascertained the capacity of each settlement for development we then appraised the Core Strategy Options against these. In this update we are not required to do this.



## 3 Stage One Results

### 3.1 Introduction

This chapter sets out the results of our analysis of social infrastructure, physical infrastructure and accessibility. An overall sustainability rating for each settlement is given, along with a breakdown of each category within each of the three classes. While a numerical scoring system has been used to work out these ratings, only the red, amber or green sustainability rating is presented here.

The ratings are not an absolute constraint on development, they are more an indication of where investment may be needed to facilitate or accommodate development.

### 3.2 Results of Social Infrastructure Assessment

The results of the social infrastructure settlement assessment are shown in Table 3.1 overleaf. The overall rating is given in the right hand column, with the ratings for each category in the columns to the left. Full score sheets for each settlement may be found in Appendix One.

In broad terms, a green rating means that supply currently exceeds demand and is expected to do so for the foreseeable future. An amber rating means that supply is currently adequate but is expected to be outstripped by future demand. A red rating means that supply currently falls short of demand and the situation is expected to worsen in future.

Of the fifteen settlements surveyed, seven were found to be red, four amber and four green.

The red settlements were:

- Cheadle
- Endon
- Ipstones
- Kingsley
- Upper Tean
- Waterhouses
- Werrington & Cellarhead
- Wetley Rocks

The amber settlements were:

- Alton
- Brown Edge

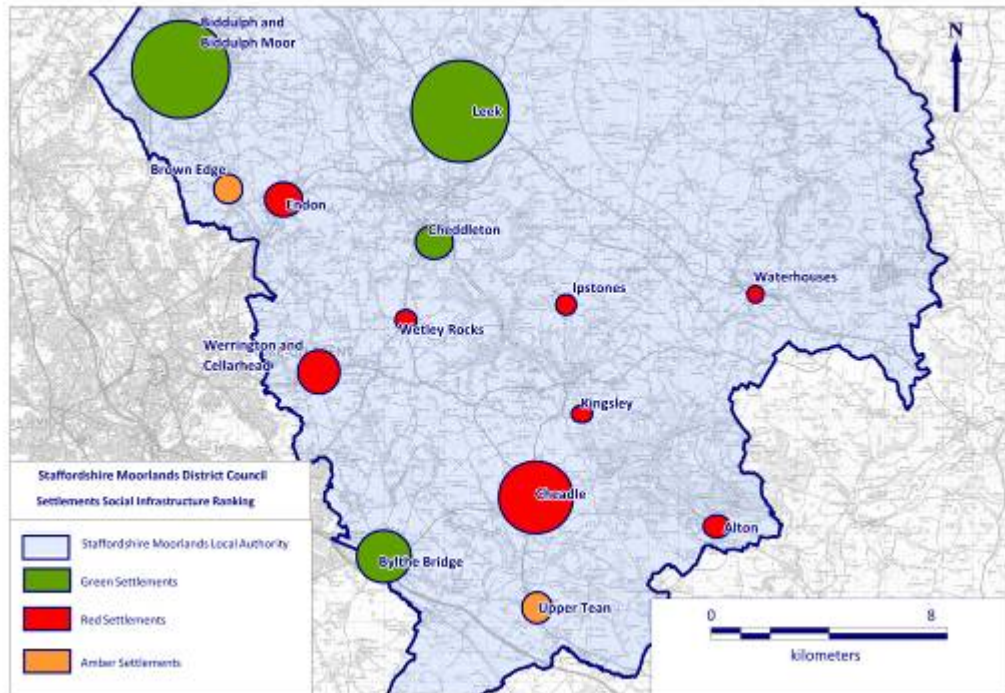
The green settlements were:

- Biddulph/Biddulph Moor
- Blythe Bridge
- Cheddleton
- Leek

Table 3.1: Results of Social Infrastructure Analysis in Table Form

Town/Hamlet	Education	Health	Community / Social Facilities	Leisure Facilities	Emergency Services	Total
Alton	Green	Orange	Green	Red	Orange	Red
Biddulph and Biddulph Moor	Green	Orange	Green	Orange	Orange	Green
Blythe Bridge	Green	Orange	Green	Orange	Orange	Green
Brown Edge	Green	Red	Green	Orange	Orange	Orange
Cheadle	Green	Orange	Orange	Orange	Orange	Red
Cheddleton	Green	Orange	Green	Orange	Orange	Green
Endon	Orange	Red	Green	Orange	Orange	Red
Ipstones	Orange	Orange	Green	Orange	Orange	Red
Kingsley	Orange	Orange	Orange	Orange	Orange	Red
Leek	Green	Orange	Green	Orange	Orange	Green
Upper Tean	Green	Orange	Green	Orange	Orange	Orange
Waterhouses	Green	Red	Green	Orange	Orange	Red
Werrington and Cellarhead	Green	Red	Green	Orange	Orange	Red
Wetley Rocks	Green	Red	Green	Orange	Orange	Red

Figure 3.1: Results of Social Infrastructure Analysis in Plan Form



The results show us that there are four settlements in the District where social infrastructure is not expected to act as a constraint on future expansion. In the other settlements, some investment in social infrastructure is likely to be required before expansion is possible. The scale of investment needed is likely to be greater in the red settlements than the amber ones.

Two of the District's three towns (Biddulph and Leek) are rated green, whereas Cheadle is rated red.

There is no clear pattern among the villages, except to note that most are rated red, with the exception of Brown Edge and Upper Tean. Neither the size nor the location of the villages appears to be a determining factor. In some ways, this is to be expected; there is no reason why investment should be skewed towards any particular part of the District and the capacity of facilities is, to a large extent, a balance between demand and supply. Blythe Bridge may appear to owe its green rating to a handy location on the edge of Stoke but the same cannot be said Endon, which lies four miles from Hanley but is rated red.

The scoring system is designed to afford more weight to those facilities deemed to be essential, such as schools and surgeries, than to those deemed desirable, such as village halls and libraries. As such, the lack of capacity at a primary school or GP surgery will have a greater impact on the rating.



### 3.3 Results of Physical Infrastructure Assessment

The results of the physical infrastructure assessment are shown in Table 3.2 overleaf.

The total rating for each development is the sum of each utility rating for that development.

In broad terms, red settlements are those where appropriate utility infrastructure is not available and significant investment may be needed to connect the new development to high capacity utility supplies.

Amber settlements are those where adequate utility infrastructure is available for connecting onto and significant investment may be needed for some utilities.

Green settlements are those where adequate high capacity utility infrastructure is in the near vicinity and reasonable level of investment is foreseen.

Of the fourteen settlements assessed 2 were found to be red, 8 amber and 4 green.

The red settlements were:

- Alton
- Waterhouses

The amber settlements were:

- Biddulph/Biddulph Moor
- Brown Edge
- Cheddleton
- Ipstones
- Kingsley
- Upper Tean
- Werrington & Cellarhead
- Wetley Rocks

The green settlements were:

- Blythe Bridge
- Cheadle

- Endon
- Leek

Table 3.2: Results of Physical Infrastructure Analysis in Table Form

Town/Hamlet	Gas		Electricity		Water		Sewerage		Total	
Alton	4		6		3		6		19	
Biddulph/Biddulph Moor	7	2	7	7	8	6	6	6	28	21
Blythe Bridge	9		8		9		8		34	
Brown Edge	8		8		7		6		29	
Cheadle	7		9		8		7		31	
Cheddleton	7		9		4		6		26	
Endon	8		9		9		7		33	
Ipstones	7		7		2		6		22	
Kingsley	7		8		4		6		25	
Leek	9		9		9		7		34	
Upper Tean	7		9		4		7		27	
Waterhouses	1		8		3		5		17	
Werrington & Cellarhead	9	9	8	8	3	7	7	3	27	27
Wetley Rocks	7		7		5		3		22	

Key:	Utility Rating	1 - 4	5 - 7	8 - 10
	Total Rating	0 - 20	21 - 30	31 - 40

Electricity supply is generally good throughout the whole District, with only three of the study settlements without falling into the amber category.

The gas supply is more variable, however many of the study settlements were close to achieving green status.. Only Alton, Biddulph and Waterhouses are rated red.

There foul sewer network would seem to be average throughout the study settlements with only Blythe Bridge being rated green and Cellerahead and Wetley Rocks being rated Red .

The potable water network seem polarised site by site. Only three of the study settlements were rated amber. A majority of the sites were rated red this would suggest there are water issues throughout the district.

## 3.4 Results of Accessibility Assessment

### *Local Accessibility*

Figure 3.3 shows the accessibility for all parts of the District after applying the criteria listed in Table 2.3. Where an area matches at least three of the four criteria, that area is coloured green (good accessibility). Where one or two criteria are met, the area is shown as amber (medium accessibility). Where the area fails to meet a single criterion the area appears red (poor accessibility).

The map shows that most of the study settlements are in areas of good accessibility (coloured green), Ipstones being the one exception. The A53, A520 and A524 corridors, in particular, stand out. These link the regional centre of Stoke to Leek, Kingsley and Werrington. The areas around Biddulph and Cheadle also fare well in the analysis.

The A523 corridor linking Macclesfield to Ashbourne via Leek and Waterhouses shows sporadic areas of good and medium accessibility, perhaps reflecting the nature of bus stop distribution. To the north and east of this corridor, the area is largely inaccessible by bus.

Figure 3.3 reflects a relatively modest bus service of one bus per hour in rural areas and two per hour in urban areas (hereafter referred to as 'standard frequency'). We have also analysed a service running at twice this rate (referred to as 'high frequency')<sup>3</sup>. Figure 3.4 shows the accessibility under this higher frequency, which shows the centres of Biddulph, Kingsley, Upper Tean and Werrington/Cellarhead as still having good local accessibility.

However, there are some impacts with some areas shifting from green to amber most notably in Cheadle and Leek.

---

<sup>3</sup> 4 buses per hour in urban areas (2 in the evening) and 2 buses per hour in rural areas

Figure 3.3: Standard Frequency Local Accessibility

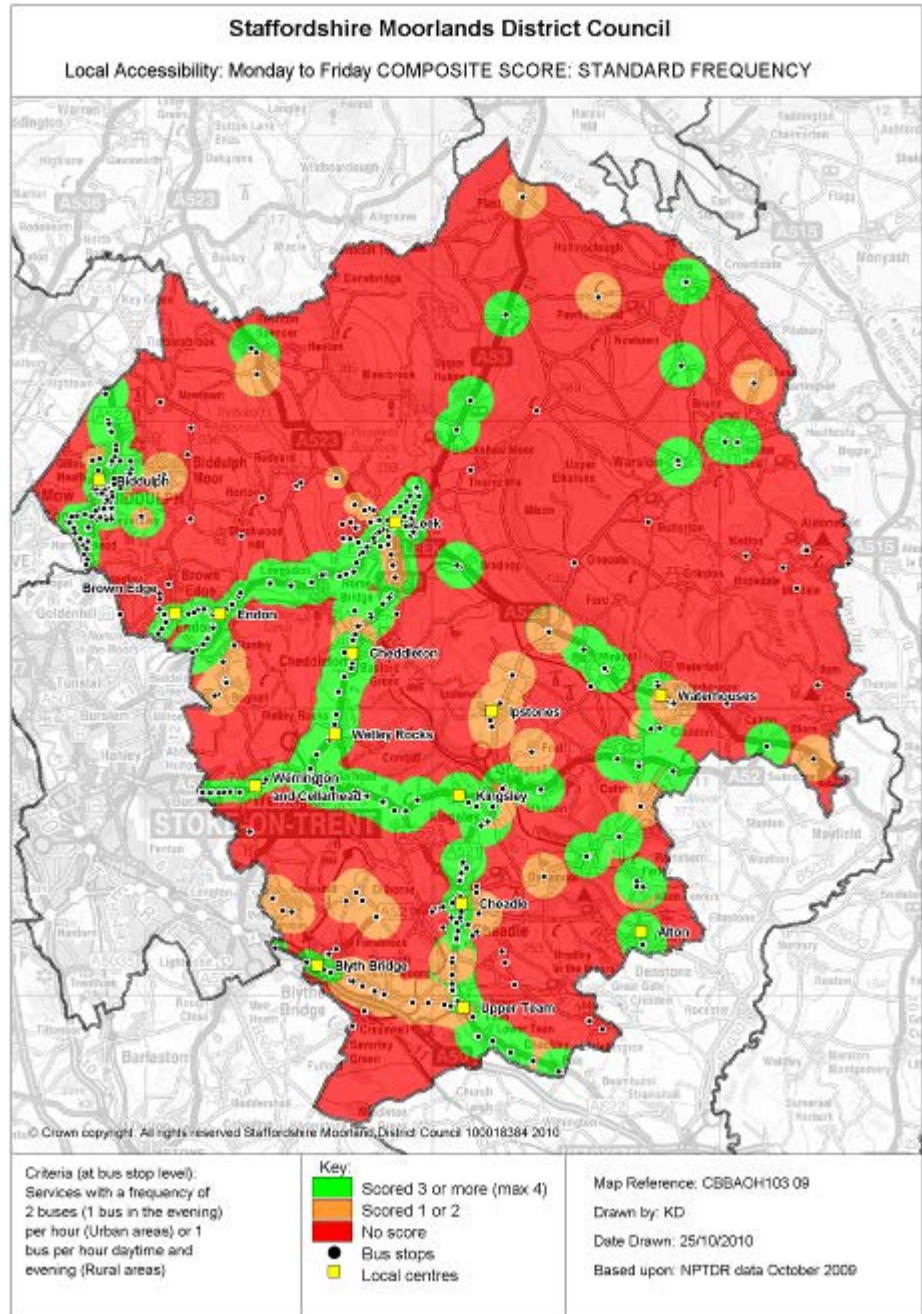
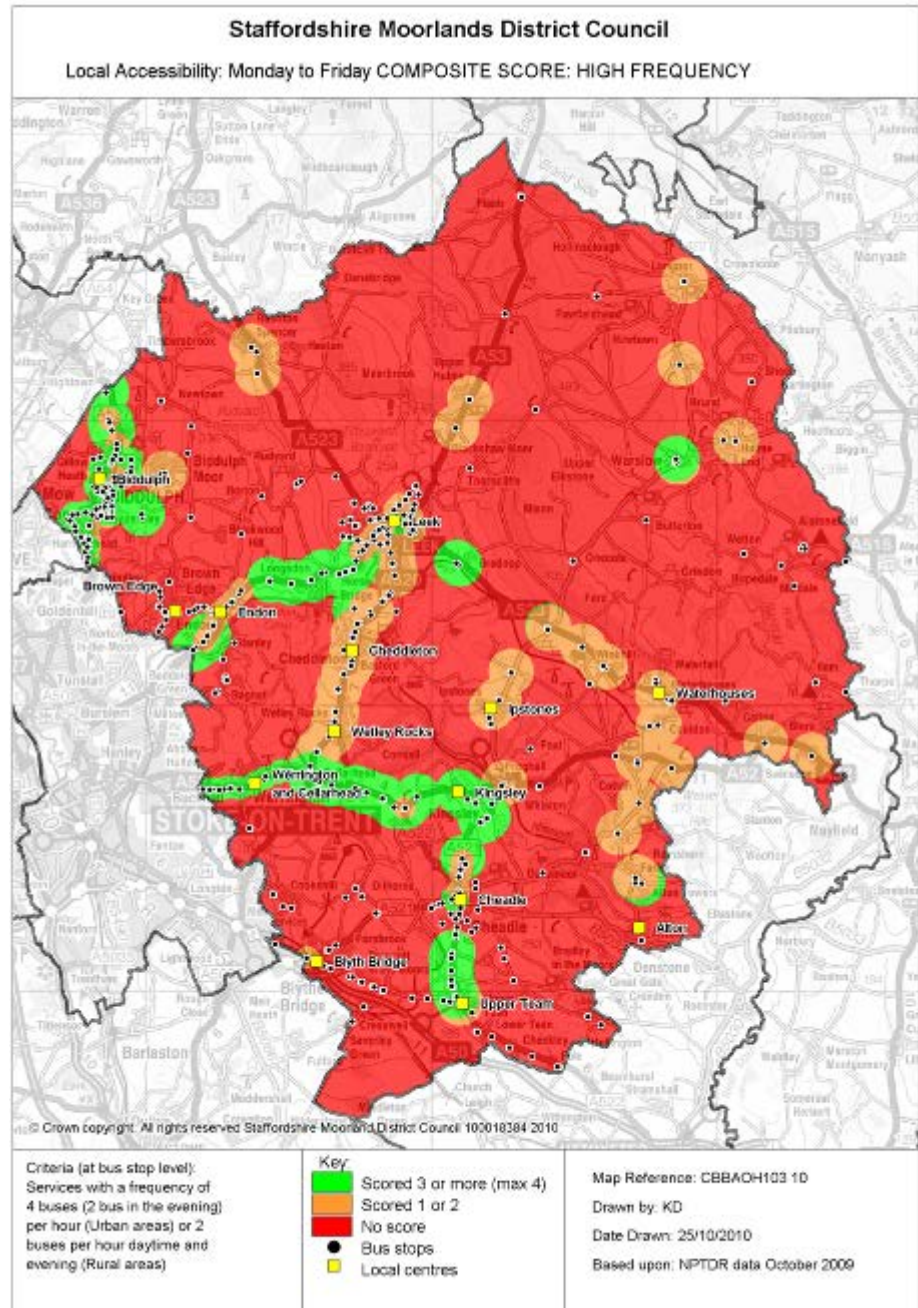


Figure 3.4 High Frequency Local Accessibility

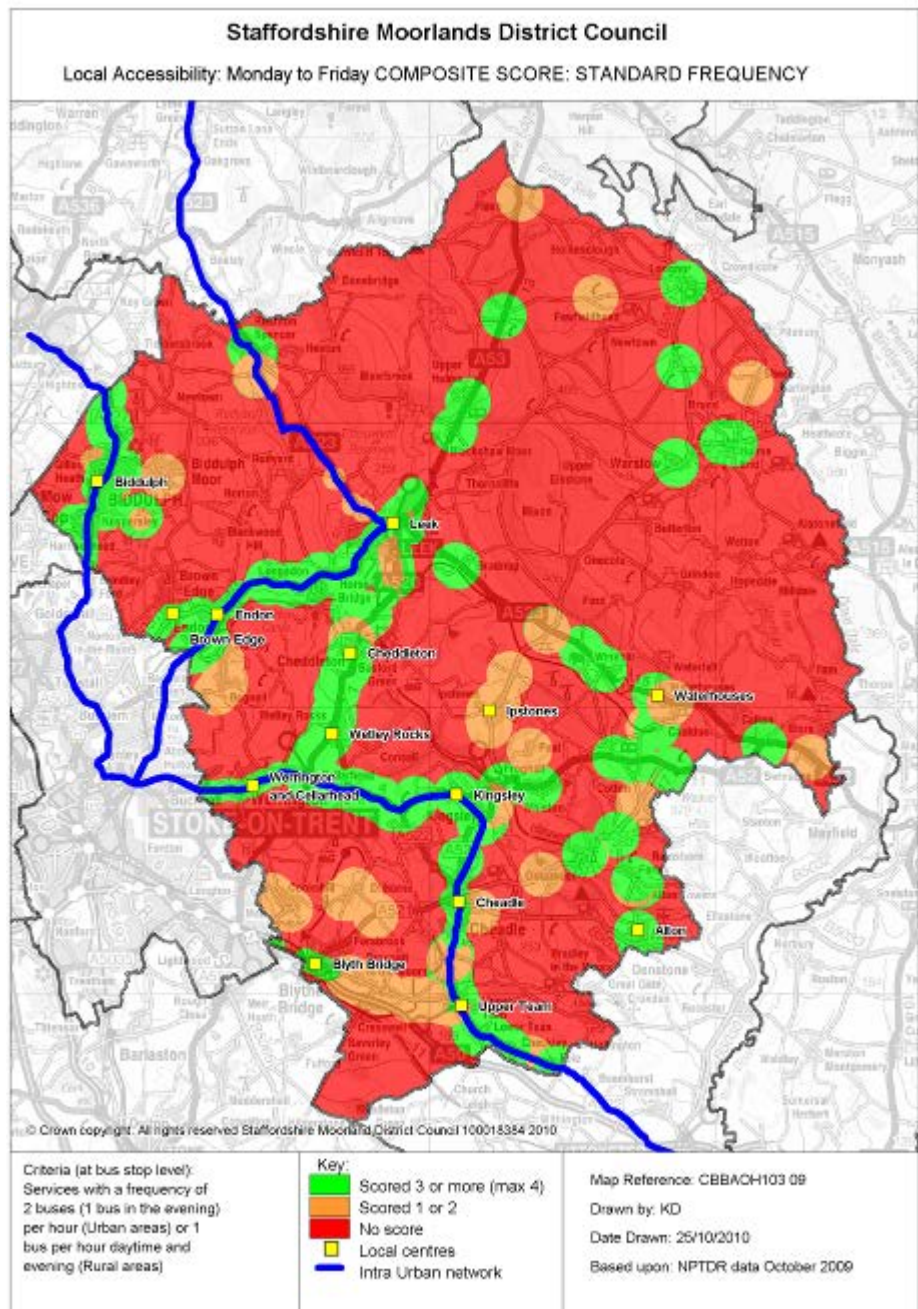


Adding the intra-urban network, the aim of which is to show areas of future investment/focus, shows a strong bus link from Leek to Macclesfield, which



is presently a corridor of a low to medium accessibility. This is shown in Figure 3.5 below.

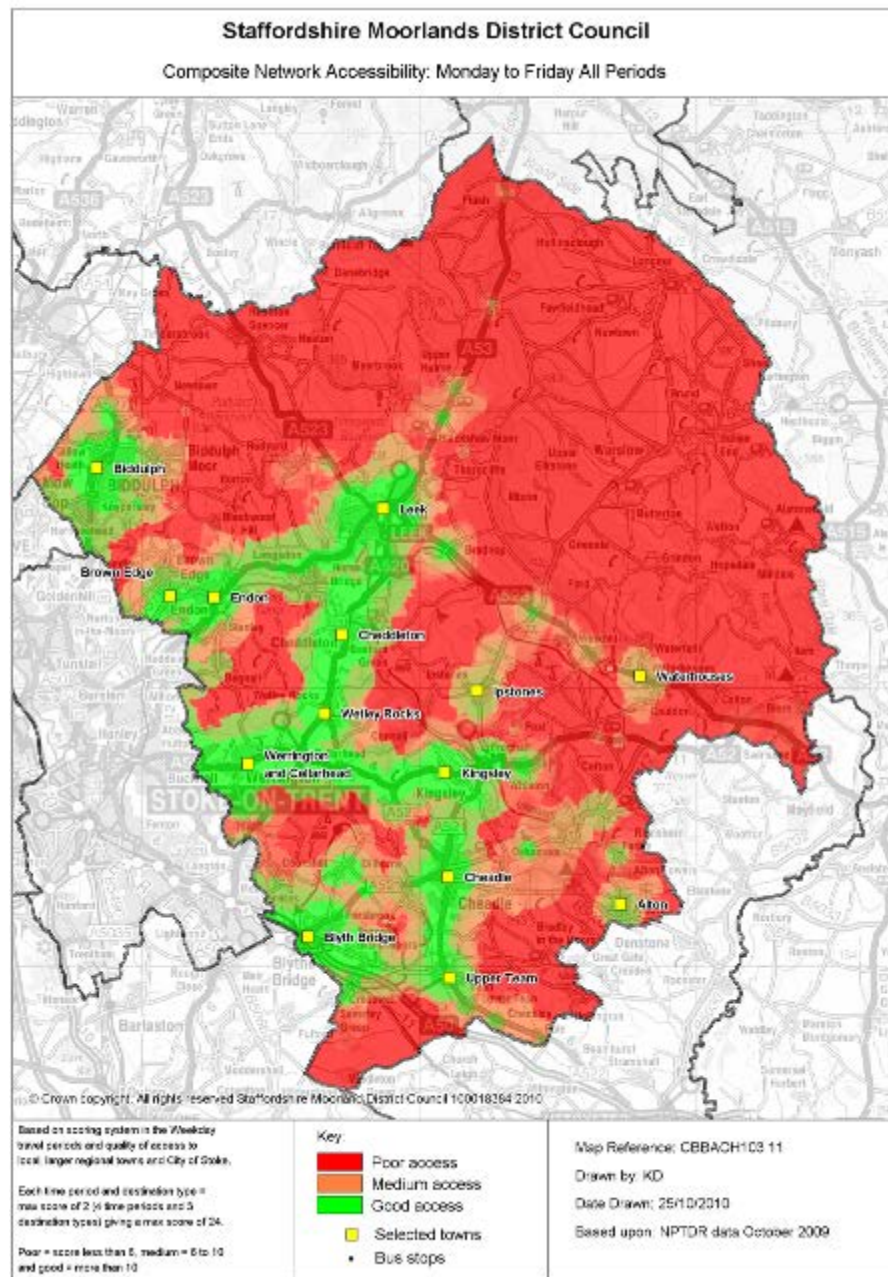
Figure 3.5: Standard Frequency Local Accessibility and the Intra-Urban Bus Network



### Network Accessibility

Figure 3.6 shows the result of this analysis. An area is deemed green if it scores more than ten, amber if it scores between six and ten and red if fewer than six points are scored.

Figure 3.6: Network Accessibility: Standard

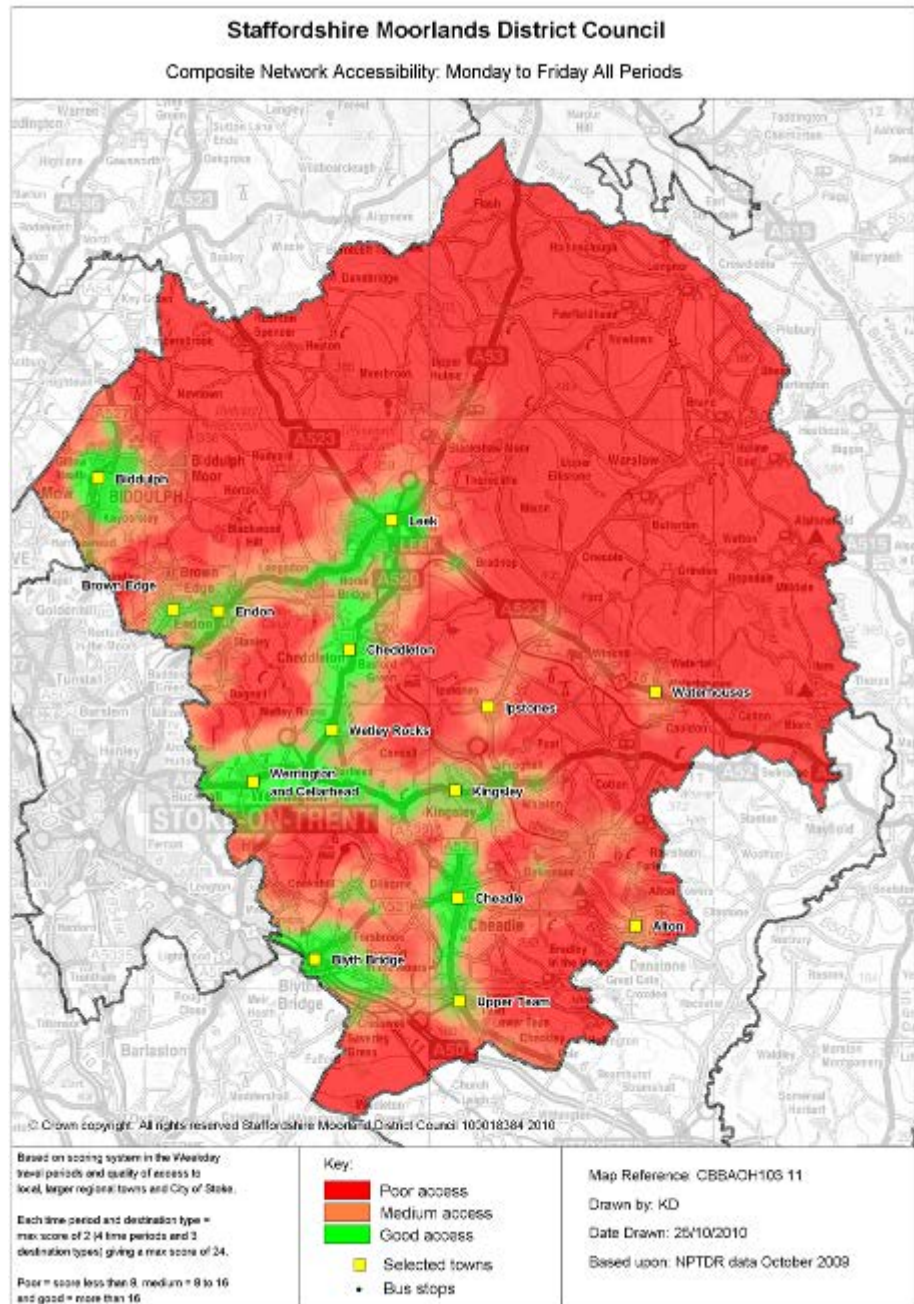


Within the Excel tool these thresholds can be changed to reflect a more lenient or strict set of criteria. As an example, figure 3.7 shows the results of



increasing the scores to <8 = red, between 9 and 16 = amber and more than 16 = green.

Figure 3.7: Network Accessibility: High

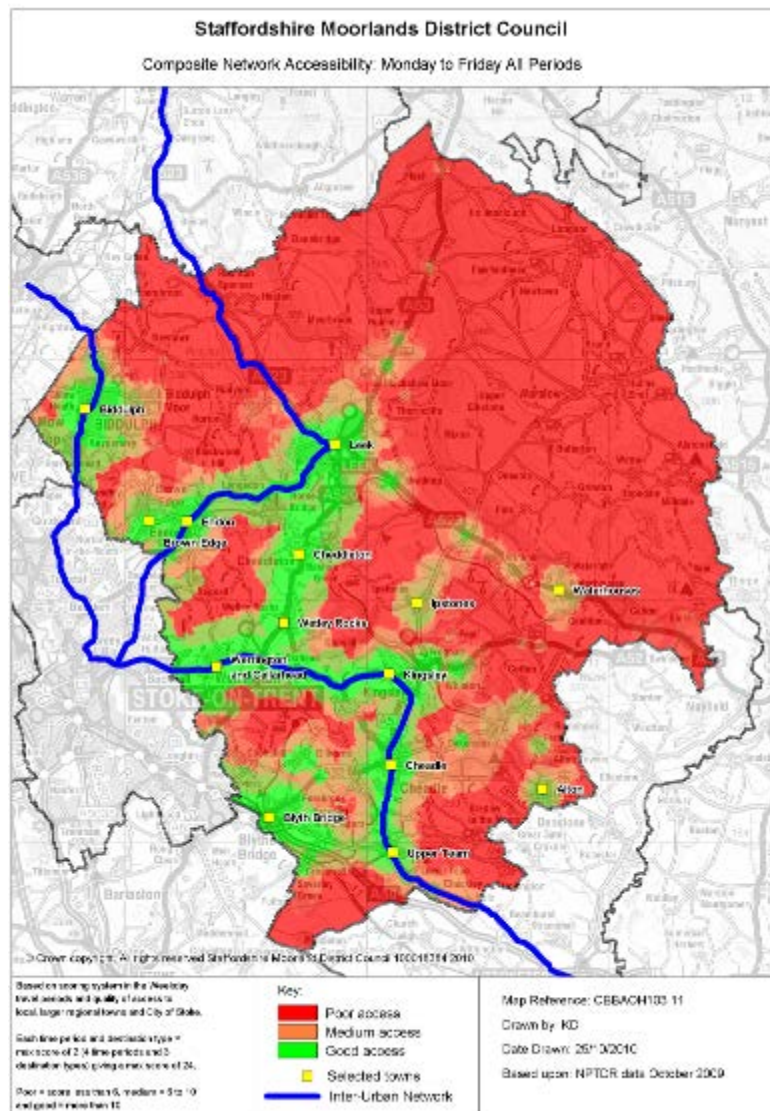




Based on figure 3.6, the results shown in this figure replicate those in the local accessibility results i.e. the areas that are most accessible are the larger centres and the corridors previously mentioned. Most of the study settlements fall within the green zone, Alton, Ipstones and Waterhouses being the exceptions and falling largely into the amber category.

Again, by adding the intra-urban network to the results (Figure 3.8 below) it can be seen that a potential growth area could be to the north, in the corridor linking Leek and Macclesfield. Currently, this corridor scores poorly but it has been highlighted in the Bus Strategy as part of the intra-urban network.

Figure 3.7: Network Accessibility and the Intra-Urban Bus Network



### *Road Accessibility*

Settlements are scored according to their distance from the District's 'A' road network (as defined by Staffordshire County Council). The distance thresholds are as follows:

- up to half a mile
- between half a mile and one mile
- more than one mile

This exercise is repeated for each main road in relation to each settlement. As may be expected, the larger towns and those villages on the edge of Stoke enjoy the best access to the main road network. The resulting pattern is shown on Figure 3.8 overleaf.

### *Summarised Results*

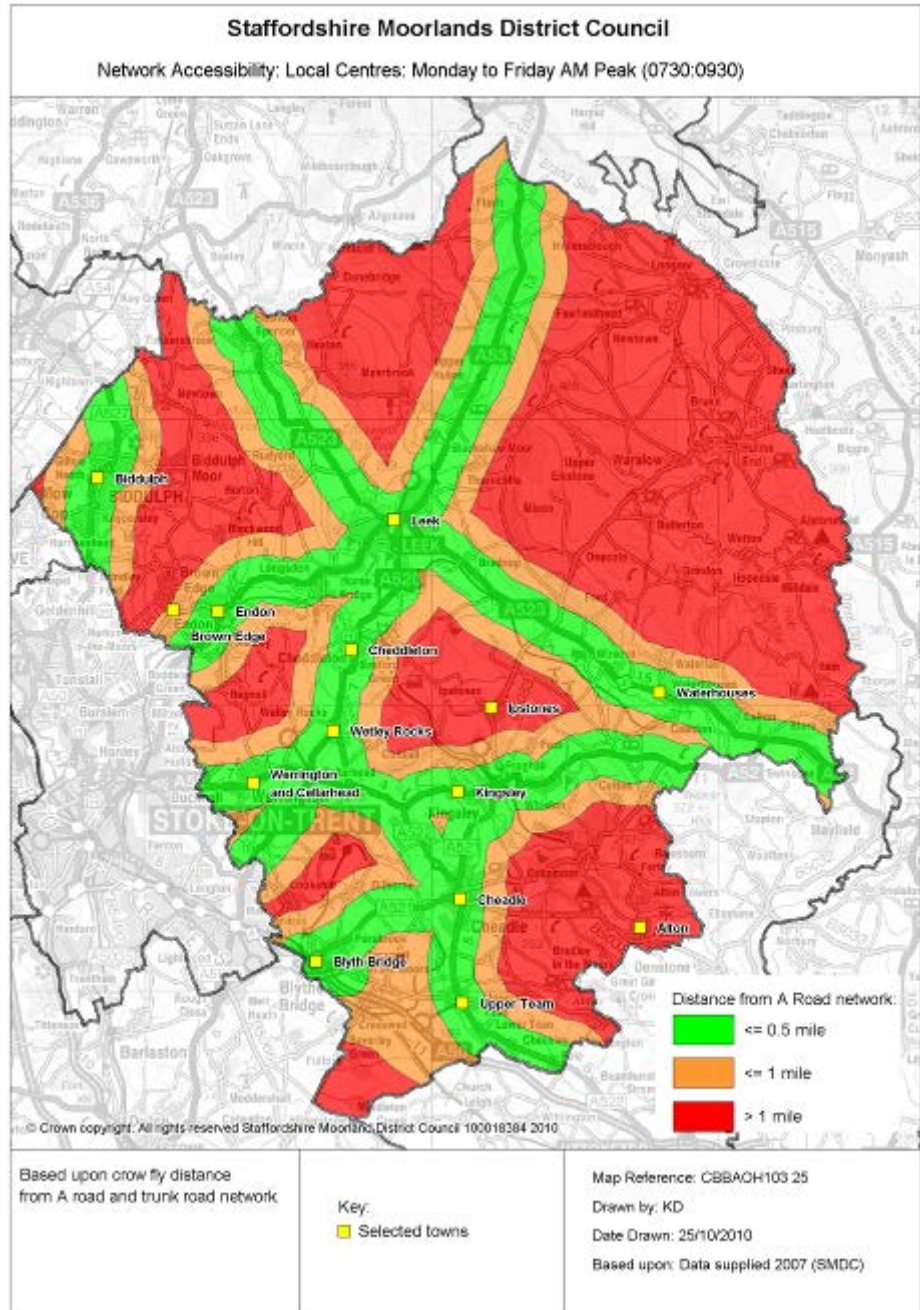
Our analysis so far has assumed each settlement to be a single point. Accordingly, the level of service or connectivity identified has been for the settlement as a whole. While this analysis forms an important part of the study, another useful exercise is to split the settlements into their constituent streets and measure what proportion of each settlement is rated green, amber and red. This provides a more refined result which takes into account the size and population of the settlement.

This analysis has been done using by identifying the results for each individual postcode sector using GIS software. The percentage of each built up area rated green, amber and red can then be calculated. Analysis is made of postcodes that are within Census output areas that form the settlement area (existing development) and by way of distance from the settlement centre.

One issue that emerges from using distance from settlement is that, in rural areas, postcodes can be a significant distance from the nearest settlement. Controls therefore need to be made to remove these from the calculation (by ignoring postcodes which are not within a set distance of a settlement centre). Our analysis shows that 88% of the population of the fifteen study settlements lives within 2.5km of the centre of that settlement while 96% lives within 5km (both measured 'as the crow flies'). As such, the results presented in Tables 3.3 and 3.4 are considered robust accessibility indicators for the study populations.

The results shown in these tables are unweighted. Scores for the three categories of accessibility have been calculated as follows: the percentage of the population rated green is multiplied by 1, that rated amber by 0.5 and that rated red by 0.

Figure 3.8: Access to the Main Road Network



The resulting numbers are then summed. By way of example, if 50% of the population is rated green and the remaining population (50%) amber, the score for that settlement will be 75 (indexed out of 100).

The overall score for each settlement is calculated by halving the network and local scores and adding these to the full road accessibility score. The

resulting number is then divided by two to give an overall score out of one hundred. The equation looks like this:

$$\text{Overall score} = ((\text{LA} + \text{NA})/2 + \text{RA})/2$$

The reason for halving the local and network accessibility scores is to avoid the overall score being skewed towards public transport. By halving means that public transport and road access each contribute 50% to the overall score.

Table 3.3 shows the analysis results for postcodes within Census Output Areas that form the existing settlements tested.

Table 3.4 shows the results of postcodes within 2.5 kilometres (crow fly) of the settlement centre.

Table 3.5 shows the results of postcodes within 5 kilometres (crow fly) of the settlement centre. Note where a postcode is within 5 kilometres of two settlements then it is counted for both, this ensures each centre is treated individually.

For all tables, scores are given out of a maximum of 100 and to aid interpretation of the tables, where cells are coloured red (scores) this represents a score of less than 50, amber a score of 50 to 74, and green 75 or more.

The analysis shows that the bulk of settlements score well, with Cheddleton, Kingsley, Leek, Upper Tean, Werrington and Wetley Rocks all scoring over 90 (based upon postcodes within 2.5km of settlement centre). Worst performing are Alton and Ipstones with scores of 40 and 34, respectively. The District's three towns and three largest villages, where the majority of development will be located, are all rated green.

Table 3.3: Local Settlement Accessibility Weighted by Population (based upon Census Outputs area forming town)

Settlement Name	'Local Accessibility'				'Network Accessibility'				Road Accessibility				Overall Score (out of 100)	Rank
	Poor	Medium	Excellent	Score	Poor	Medium	Excellent	Score	Poor	Medium	Excellent	Score		
	% area	% area	% area		% area	% area	% area		% area					
Alton	6.3%	0.0%	93.7%	94	6.3%	3.1%	90.6%	92	100%	0.0%	0.0%	0	46	13
Biddulph	0.7%	7.9%	91.4%	95	0.3%	21.7%	77.9%	89	6.8%	9.7%	83.5%	88	90	8
Blyth Bridge	51.1%	0.0%	48.9%	49	0.0%	0.0%	100%	100	0.0%	0.5%	99.5%	100	87	10
Brown Edge	34.6%	0.0%	65.4%	65	4.7%	36.6%	58.7%	77	42.6%	57.4%	0.0%	29	50	12
Cheadle	41.8%	0.6%	57.6%	58	0.5%	0.8%	98.7%	99	0.0%	1.0%	99.0%	99	89	9
Cheddleton	1.4%	0.0%	98.6%	99	0.0%	0.0%	100%	100	0.0%	1.4%	98.6%	99	99	3
Endon	6.9%	0.0%	93.1%	93	1.6%	5.2%	93.2%	96	2.4%	3.6%	94.0%	96	95	5
Ipstones	0.0%	100%	0.0%	50	0.0%	0.0%	100%	100	100%	0.0%	0.0%	0	38	14
Kingsley	0.0%	0.0%	100%	100	0.0%	0.0%	100%	100	0.0%	0.0%	100%	100	100	1
Leek	15.0%	1.4%	83.6%	84	0.2%	1.1%	98.8%	99	0.0%	3.0%	97.0%	99	95	4
Upper Tean	0.0%	0.0%	100%	100	0.0%	0.0%	100%	100	0.0%	0.0%	100%	100	100	1
Waterhouses	37.0%	0.0%	63.0%	63	40.1%	53.4%	6.5%	33	1.9%	22.1%	75.9%	87	68	11
Werrington and Cellarhead	20.5%	0.0%	79.5%	80	0.0%	0.8%	99.2%	100	0.0%	0.8%	99.2%	100	95	7
Wetley Rocks	6.3%	0.0%	93.7%	94	3.1%	3.1%	93.7%	95	3.1%	3.1%	93.7%	95	95	6



Table 3.4: Local Settlement Accessibility Weighted by Population (distance from settlement capped at 2.5km)

Settlement Name	'Local Accessibility'				'Network Accessibility'				Road Accessibility				Overall Score (out of 100)	Rank
	Poor	Medium	Excellent	Score	Poor	Medium	Excellent	Score	Poor	Medium	Excellent	Score		
	% area	% area	% area		% area	% area	% area		% area					
Alton	18.6%	0.0%	81.4%	81	18.3%	7.4%	74.4%	78	100%	0.0%	0.0%	0	40	14
Biddulph	2.2%	8.9%	88.9%	93	0.2%	22.0%	77.9%	89	7.0%	11.1%	81.9%	87	89	6
Blyth Bridge	43.6%	8.1%	48.3%	52	0.4%	4.4%	95.2%	97	6.3%	6.3%	87.4%	91	83	12
Brown Edge	18.1%	2.2%	79.7%	81	4.9%	20.3%	74.8%	85	19.2%	27.5%	53.3%	67	75	9
Cheadle	43.5%	0.5%	56.0%	56	0.8%	3.3%	95.9%	98	0.6%	2.1%	97.3%	98	88	11
Cheddleton	6.3%	0.6%	93.1%	93	2.4%	3.9%	93.8%	96	1.3%	3.9%	94.8%	97	96	2
Endon	17.4%	4.2%	78.4%	80	6.3%	20.7%	73.0%	83	18.5%	28.6%	52.9%	67	75	10
Ipstones	25.0%	71.6%	3.3%	39	18.2%	9.1%	72.7%	77	84.1%	10.2%	5.6%	11	34	15
Kingsley	7.0%	0.0%	93.0%	93	3.4%	3.3%	93.3%	95	2.1%	0.5%	97.4%	98	96	3
Leek	15.3%	0.9%	83.8%	84	0.3%	1.4%	98.2%	99	0.0%	3.0%	97.0%	98	95	5
Upper Tean	6.3%	1.8%	91.9%	93	4.1%	6.2%	89.7%	93	1.2%	6.9%	91.9%	95	94	4
Waterhouses	31.1%	0.0%	68.9%	69	40.8%	51.9%	7.3%	33	0.0%	19.6%	80.4%	90	71	13
Werrington and Cellarhead	24.7%	0.0%	75.3%	75	1.7%	2.5%	95.8%	97	1.1%	2.8%	96.1%	98	92	8
Wetley Rocks	5.4%	0.0%	94.6%	95	3.4%	1.3%	95.3%	96	1.6%	3.8%	94.6%	97	96	1

Table 3.5: Local Settlement Accessibility Weighted by Population (distance from settlement capped at 5km)

Settlement Name	'Local Accessibility'				'Network Accessibility'				Road Accessibility				Overall Score (out of 100)	Rank
	Poor	Medium	Excellent	score	Poor	Medium	Excellent	score	Poor	Medium	Excellent	score		
	% area	% area	% area		% area	% area	% area		% area					
Alton	36.6%	4.6%	58.8%	61	35.2%	27.6%	37.2%	51	96.3%	3.7%	0.0%	2	29	15
Biddulph	10.1%	9.3%	80.6%	85	4.2%	25.2%	70.6%	83	14.6%	11.1%	74.2%	80	82	4
Blyth Bridge	48.5%	11.0%	40.5%	46	3.3%	7.9%	88.8%	93	4.2%	12.7%	83.1%	89	79	13
Brown Edge	10.0%	8.3%	81.7%	86	5.2%	27.6%	67.2%	81	16.3%	18.3%	65.3%	75	79	6
Cheadle	35.3%	3.4%	61.3%	63	3.1%	5.4%	91.5%	94	4.1%	5.1%	90.8%	93	86	9
Cheddleton	15.8%	2.7%	81.5%	83	3.4%	3.6%	93.1%	95	3.0%	5.2%	91.9%	94	92	2
Endon	20.4%	6.2%	73.4%	76	10.2%	23.5%	66.4%	78	22.1%	25.9%	52.0%	65	71	11
Ipstones	21.1%	19.7%	59.2%	69	18.2%	8.7%	73.1%	77	22.4%	7.7%	69.9%	74	73	12
Kingsley	36.4%	8.1%	55.5%	60	4.1%	5.5%	90.4%	93	9.9%	3.4%	86.7%	88	82	10
Leek	17.0%	1.1%	81.9%	82	3.4%	4.0%	92.5%	95	1.3%	4.7%	94.0%	96	92	1
Upper Tean	36.4%	1.5%	62.1%	63	3.4%	4.3%	92.3%	94	2.4%	5.6%	92.0%	95	87	8
Waterhouses	45.7%	4.6%	49.7%	52	58.7%	36.9%	4.4%	23	18.1%	18.7%	63.2%	73	55	14
Werrington and Cellarhead	21.9%	10.9%	67.1%	73	5.8%	11.0%	83.2%	89	8.0%	9.4%	82.6%	87	84	7
Wetley Rocks	19.4%	2.4%	78.2%	79	5.9%	4.3%	89.8%	92	4.3%	5.8%	89.9%	93	89	3

### 3.5 Overall Settlement Results/Conclusions

Table 3.6 overleaf shows the ratings for each settlement against each of the three classes of information.

In the case of accessibility, the results from Table 3.4 have been used. Under this scenario, the extent of each town or village is capped at 2.5km from the centre of the settlement. This captures 88% of the population whose address relates to one of the fifteen study settlements and, importantly, avoids any overlapping of settlements.

Some clear patterns can be seen in the table below. Leek and Blythe Bridge are the only settlements rated green on all accounts, so they have the greatest capacity for development without significant investment in infrastructure. Biddulph/Biddulph Moor and Cheddleton are next in line, with just one class rated amber. At the other end of the scale, Alton, Ipstones and Waterhouses have the lowest capacity for development. In general terms, the larger the settlement, the greater its capacity for development.

Table 3.6: Overall Settlement Ratings

Town/Hamlet	Social Infrastructure	Physical Infrastructure	Accessibility
Alton	Red	Red	Red
Biddulph / Biddulph Moor	Green	Orange	Green
Blythe Bridge	Green	Green	Green
Brown Edge	Orange	Orange	Green
Cheadle	Red	Green	Green
Cheddleton	Green	Orange	Green
Endon	Red	Green	Green
Ipstones	Red	Orange	Red
Kingsley	Red	Orange	Green
Leek	Green	Green	Green
Upper Tean	Orange	Orange	Green
Waterhouses	Red	Red	Orange
Werrington & Cellarhead	Red	Orange	Green
Wetley Rocks	Red	Orange	Green



For details of your nearest Halcrow office, visit our website  
[halcrow.com](http://halcrow.com)



Services in Biddulph & Biddulph Moor	Present	Level of presence	Capacity	Demand	Future Plans	Expectations of future Demand	Summary
	Y/N	how many there are?	number	more, equal to or Less than capacity	No Change, expansion, contraction	No Change, Small Increase, large increase, small reduction, large reduction	
<b>Education</b>							
Primary school/First School	Yes		Kingsfield First School - 243 Knypersley First School - 294 Moor First School - 112 Oxhey First School - 243 Squirrel Hayes First School - 150 English Martyrs' Catholic Primary School - 120	Less (46 places) Less (16 places) Less (23 places) Less (29 places) Less (13 places) Less (50 places)	No Change	Small reduction	
Secondary School/High School	Yes		Biddulph High School - 770 Park Middle Coomunity School, Knypersley - 482	More (- 87 Places) Less (97 places)	No Change	Small reduction	
College	Yes		Biddulph High School (13-18 years) - 770	More (- 87 Places)	No Change	Small reduction	
<b>Health</b>							
GP surgery	Yes		3 2000/doctor	More (has 9 - 10k patients in each)	No Change	Small Increase	
Dentists	Yes		2 Not accepting NHS	More	Expansion	Small Increase	
Hospital	No - Congleton War Memorial Hospital in Cheshire nearby or Westcliffe Hospital (within 3 miles)		2	Less	No Change	Small Increase	
Hospital with A & E	No	Nearest University Hospital of North Staffordshire	Currently has 500,000 but can cope with more	More	Expansion - New hospital to be built at Haywood Hospital Site (approx 4 miles)	Small Increase	
Opticians	Yes		2 2000/optician	More	No Change	Small Increase	
<b>Community/Social Facilities</b>							
Village hall	Yes		One at Biddulph Moor	Less	No Change	No Change	
Post Office	Yes		2 in Biddulph 1 in Biddulph Moor	Equal	No Change	Small Increase if nearby post offices are closed.	
Churches	Yes		6	Less	No Change	No Change	
<b>Leisure Facilities</b>							
Swimming Pools	Yes		1 at Biddulph Valley Leisure Centre	Less	No Change	Small Increase	
Sports Pitches/Playing Field	Yes		7 -Only one pitch in Biddulph Moor 7500 (1000 per 1.6 ha)	Less	Playing field outlined as potential play facility site and expansion possible. 0.5 senior pitch needed in Biddulph Moor.	Small Increase	
Library	Yes		1 in Biddulph	Equal	No Change	No Change	
Public Parks	Yes		1 - Biddulph Grange Country Park 49,000 (1000 people per 0.6 ha)	Less	No Change	Small Increase	
Fitness Centres (gyms)	Yes		1 at Biddulph Valley Leisure Centre	Less	No Change	Small Increase	
<b>Emergency Services</b>							
Police	Served by Staffordshire Police (Moorlands West NPU Division)		Post Station in Biddulph	Less	No Change	No Change	
Fire	Yes		1 station in Biddulph	Less	No Change	No Change	
Ambulance	Yes		Served by Staffordshire ambulance service (also known as West Midlands Ambulance Service) Station present.	Less	Expansion - several new ambulances and increase of employees	Small Increase	

Services in Alton	Present	Level of presence	Capacity	Demand	Future Plans	Expectations of future Demand	Summary
	Y/N	how many there are?	number	more, equal to or Less than capacity	No Change, expansion, contraction	No Change, Small Increase, large increase, Small Reduction, large reduction	
<b>Education</b>							
Primary school	Yes	2 (one being a first school)	St. John's CE (VC) Primary School - 175* St. Peters CE(A) First School - 60*	Less (11 remaining places)* Less 27 places remaining*	St John's due to close	Small Reduction	
Secondary School	No nearest one is in Cheadle		1 Cheadle High School - 800	Less (31 places remaining)	No Change	Small Reduction	
College	No (one in the nearby village Denstone)		1 Destone College (Private) 341 boys and 179 girls, including 93 boys and 47 girls in the 6th form	Equal - however can increase numbers if necessary	No Change	Small Reduction	
<b>Health</b>							
GP surgery/Medical Centre	Yes		1 13,500 + patients Recently had new primary care facility built	Less - however expected to be used by nearby villages	No Change	Small Increase (from nearby villages)	
Dentists	no - nearest one is in Cheadle	3 in Cheadle	Not accepting NHS patients - 2000/dentist	More	No Change	Small Increase	
Hospital	No	Nearest is Cheadle Hospital (4 Miles)	75,000	Equal	No Change	Small Increase	
Hospital with A & E	No	Nearest University Hospital of North Staffordshire (12.8 Miles)	Currently has 500,000 but can cope with more	More	No Change	Small Increase	
Opticians	No - nearest one in Cheadle		1 2000/optician	More	No Change	Small Increase	
<b>Community/Social Facilities</b>							
Village hall	Yes		1	Less - on average 1 to 2 bookings per week. Various activities	Priorities to improve village hall facilities and have activities available at village hall	No Change	
Post Office	Yes - Smithy Bank, Alton, Stoke on Trent, Staffordshire, ST10 4AA		1	Less	No Change	Small Reduction	
Churches	Yes	3 - St Johns Church, Methodist Church, St Peters CE Church		Less	No Change	No Change	
<b>Leisure Facilities</b>							
Swimming Pools	No	Nearest in Cheadle (South Moorlands Leisure Centre Approx 3.69 miles)		More	No Change	Small Increase	
Sports pitches/Playing field	Yes	1 at Alton Village Hall	1000 per 1.6 ha	more	Expansion/improvements to current pitch	Small Increase	
Library	Yes	Has a mobile library service		Equal	May expand mobile service	No Change	
Public Parks	No	Nearest in Cheadle	N/A	More	No Change	Small Increase	
Fitness Centres (gyms)	No	Nearest in Cheadle	N/A	More	No Change	Small Increase	
<b>Emergency Services</b>							
Police	Served by Staffordshire Police (Moorlands East NPU Division)	1 - Based at Cheadle Police Station (approx 3.99 miles)		More	No Change	No Change	
Fire	Served by Staffordshire Fire and Rescue Service	Nearest Station in Cheadle		More	No Change	No Change	
Ambulance	Yes	Served by Staffordshire ambulance service (merged with West Midlands Ambulance Service in Oct 2007) nearest is in Cheadle (approx 4.7 miles)		More	Expansion - several new ambulances and increase of employees	Small Increase	

emergency services are more to do with coverage rather than actually having a station present

\* Taken from School Organisation Plan 2007 - 2012

Population 1243

(Taken from Staffordshire County Council, Small Area Estimates 1999)

THE DISTRICT COUNCIL WILL SEEK TO ACHIEVE A MINIMUM STANDARD OF 3.2 HA. OF PUBLIC OPEN SPACE PER 1000 POPULATION AS FOLLOWS:-

- PLAYING FIELDS 1.6 HA
- CHILDREN'S PLAY AREAS 0.6 HA
- MAJOR OPEN SPACE 0.4 HA
- INCIDENTAL OPEN SPACE 0.6 HA

Services in Brown Edge	Present	Level of presence	Capacity	Demand	Future Plans	Expectations of future Demand	Summary
	Y/N	how many there are?	number	more, Equal to or Less than capacity	No Change, expansion, contraction	No Change, Small Increase, large increase, Small Reduction, large reduction	
<b>Education</b>							
Primary school/First School	Yes		St. Anne's CE(VC) Primary School - 196	Less (21 places)	No Change	Small Reduction	
Secondary School/High School	No	nearest one in Endon	Endon High School - 700	Less (23 places)	No Change	Small Reduction	
College	No	Nearest one in Biddulph	Biddulph High School (13-18 years) - 770	More ( - 87 Places)	No Change	Small Reduction	
<b>Health</b>							
GP surgery	No	Nearest in Endon and Knypersley	2000/Doctor	More	No Change	Small Increase	
Dentists	No	Nearest in Endon and Knypersley	2000/Dentist	More	No Change	Small Increase	
Hospital	No	Nearest Westcliffe (2.4 Miles) or Haywood Hospital (2.6 Miles) in Stoke on Trent	75,000	Less	New hospital to be built at Haywood Hospital	Small Increase	
Hospital with A & E	No	Nearest University Hospital of North Staffordshire (5.6 Miles) (Hartshill Rd, Stoke on Trent)	Currently has 500,000 but can cope with more	More	Expansion - new hospitals to be built at Haywood Hospital Site (2.6 miles).	Small Increase	
Opticians	No	Nearest in Stoke on Trent	2000/Optician	More	No Change	Small Increase	
<b>Community/Social Facilities</b>							
Village hall	Yes	1		Equal	No Change	No Change	
Post Office	Yes	1		Less	No Change	Small Reduction	
Churches	Yes	3		Less	No Change	Small Reduction	
<b>Leisure Facilities</b>							
Swimming Pools	No	Nearest in Stoke on Trent		More	No Change	Small Increase	
Sports pitches	Yes	1		More	Expansion - Current pitch poor. Talks of provision of 2 new pitches.	Small Increase	
Library	Yes	Has a mobile Library service		Equal	May expand mobile service	No Change	
Public Parks	No (does have Marshes Hill Common)	Nearest in Biddulph	7500 (1000 per 1.6 ha)	More	No Change	Small Increase	
Fitness Centres (gyms)	No	Nearest one in Biddulph		More	No Change	Small Increase	
<b>Emergency Services</b>							
Police	Yes- Served by Staffordshire Police (Moorlands West NPU Division)	Based at Leek (approx 6.2 miles)		More	No Change	No Change	
Fire	Yes	Served by Staffordshire Fire and Rescue Service. Based at Biddulph (approx 5 miles)		More	No Change	No Change	
Ambulance	Yes	Served by Staffordshire ambulance service (also known as West Midlands Ambulance Service) based at Haywood Abulance Station in Stoke		Equal	Expansion - several new ambulances and increase of employees	Small Increase	

Services in Caverswall & Cookshill	Present	Level of presence	Capacity	Demand	Future Plans	Expectations of future Demand	Summary
	Y/N	how many there are?	number	more, Equal to or Less than capacity	No Change, expansion, contraction	No Change, Small Increase, large increase, Small Reduction, large reduction	
<b>Education</b>							
Primary school/First School	Yes		St Filumena's Catholic Primary School - 161 St Peter's Cofe School - 198	More ( - 16 pupils places) Less (15)	No Change	Small Reduction	
Secondary School/High School	No	Nearest one in Blythe Bridge	Blythe Bridge High School and College - 1054	Less - (27 places)	No Change	Small Reduction	
College	No	Nearest one in Blythe Bridge	Blythe Bridge High School and College - 1054	Less - (27 places)	No Change	Small Reduction	
<b>Health</b>							
GP surgery	No	1 in Blythe Bridge and 1 in Meir Stoke on Trent	2000/doctor	Demand is more in area but both surgeries outside the area are excepting New Patients	No Change	Small Increase	
Dentists	No	Nearest one in Meir Stoke on Trent	2000/dentist - Not accepting new NHS	More	No Change	Small Increase	
Hospital	No	Nearest one Longton Hospital (3.2 miles)		Equal	No Change	No Change	
Hospital with A & E	No	Nearest one University Hospital of North Staffordshire	Currently has 500,000 but can cope with more	More	No Change	No Change	
Opticians	No	Nearest one in Stoke on Trent	2000/optician	More	No Change	No Change	
<b>Community/Social Facilities</b>							
Village hall	yes		1 Available for hire three times a week	Less	No Change	No Change	
Post Office	Yes		1	Less	No Change	Small Reduction	
Churches	Yes	2 - St Filumena's (R.C.) and St Peters		Less	No Change	No Change	
<b>Leisure Facilities</b>							
Swimming Pools	No	Nearest is Longton Swimming Pool in Stoke on Trent (approx 1.2 miles)		Equal	No Change	Small Increase	
Sports pitches	Yes	1 - Caverswall Cricket Club	1000 per 1.6ha	Less	Expansion - Land adjacent to St Peters safeguarded for new playing field	Small Increase	
Library	Yes	Has a mobile Library service		Equal	May expand mobile service	No Change	
Public Parks	No	Nearest in Cheadle	4500	More	No Change	Small Increase	
Fitness Centres (gyms)	No	Nearest is Meir Fitness Centre Stoke on Trent (approx 1.2 miles).		Equal	No Change	Small Increase	
<b>Emergency Services</b>							
Police		Served by Staffordshire Police (Moorlands East NPU)	Nearest Station in Werrington (3.5 miles)	More	No Change	No Change	
Fire		Served by Staffordshire Fire and Rescue Service	Nearest is Uttoxeter rd, Stoke on Trent (2.8 miles)	Less	No Change	No Change	
Ambulance	Yes	Served by Staffordshire ambulance service (also known as West Midlands Ambulance Service) Nearest Station at Cheadle (approx 4.9 miles)		More	Expansion - several new ambulances and increase of employees	Small Increase	

Services in Cheadle	Present	Level of presence	Capacity	Demand	Future Plans	Expectations of future Demand	Summary
	Y/N	how many there are?	number	More, Equal to or Less than capacity	No Change, expansion, contraction	No Change, Small Increase, large increase, Small Reduction, large reduction	
<b>Education</b>							
Primary school	Yes		3 St Giles Rc (Aided) Primary School - 236 Cheadle Primary School - 420 Bishop Rawle Cofe (A) Primary School - 350	More (-16 places) (47 places) Less Less	Expansion - F1(A) LAND TO EAST OF CHURCHILL ROAD, CHEADLE WILL BE SAFEGUARDED FOR A NEW SCHOOL.	Small Reduction	
Secondary School	Yes		2 Painsley Catholic College - 793 Cheadle High School - 800	More (-110 places) Less (3 Places)	No Change	Small Reduction	
College	Yes		1 Moorlands VI Form Centre - 400	Less	No Change - has recently been engaged in a million pound building programme adding many new facilities including additional laboratories, staff room, drama/music studio, a careers Library/office as well as improved access for all students.	Small Reduction	
<b>Health</b>							
GP surgery	Yes		3 2000/doctor (currently has 9-10k per doctor)	More - However, all excepting new Patients. Can also use Alton Health Centre	No Change	Small Increase	
Dentists	Yes		3 Not excepting NHS Patients	More	Expansion	Small Increase	
Hospital	Yes	1 - Cheadle Hospital	75,000	Less	No Change	Small Increase	
Hospital with A & E	No	Nearest University Hospital of North Staffordshire	Currently has 500,000 but can cope with More	More	No Change	Small Increase	
Opticians	Yes	1 - Nusyle Optician	2000/optician	More	No Change	No Change	
<b>Community/Social Facilities</b>							
Village hall	yes		1	Equal	No Change	No Change	
Post Office	Yes	2 - Ashbourne Road 50 Ashbourne Road, Cheadle, Stoke-On-Trent, Staffordshire and The Shopping Centre, Cheadle, Stoke on Trent, Staffordshire		Equal	No Change	Small Increase if surrounding post offices are closed	
Churches	Yes		5	Less	No Change	No Change	
<b>Leisure Facilities</b>							
Swimming Pools	Yes	South Moorlands leisure Centre		Less	No Change	Slight Increase	
Sports Pitches	Yes	The Recreation Ground has a large football playing field, two playground areas (one of which is enclosed for younger children), a farm-based basketball area, plus extensive additional open space for walking. There are bowling greens with groundsman's facilities, and 2 hard court tennis courts. two skateboard ramps		Less	Talks on encouraging More sport in the area and the provision of play site. 2 mini soccer pitches required at Mill Hayes. In addition, the Local Plan states: MAJOR PUBLIC OPEN SPACE WILL BE PROVIDED AT THE FOLLOWING SITES IN CHEADLE:- - LIGHTWOOD - MOBBERLEY FARM - MAJORS BARN II	Slight Increase	
Library	Yes		1	Equal	No change	No Change	
Public Parks	Yes		1	Less	Expansion: Local Plan states: MAJOR PUBLIC OPEN SPACE WILL BE PROVIDED AT THE FOLLOWING SITES IN CHEADLE:- - LIGHTWOOD - MOBBERLEY FARM - MAJORS BARN II	Slight Increase	
Fitness Centres (gyms)	Yes	1 - South Moorlands Leisure Centre		Less	No Change	Small Increase	
<b>Emergency Services</b>							
Police	Served by Staffordshire police (Moorlands East NPU)	Station in Cheadle		Less	No Change	No Change	
Fire	Yes	Station in Cheadle		Less	Looking to reduce number of fire appliances.	No Change	
Ambulance	Yes	Served by Staffordshire ambulance service (also known as West Midlands Ambulance Service)		Less	Expansion - several new ambulances and increase of employees	Small Increase	

Services in Upper Tean	Present	Level of presence	Capacity	Demand	Future Plans	Expectations of future Demand	Summary
	Y/N	how many there are?	number	more, Equal to or Less than capacity	No Change, expansion, contraction	No Change, Small Increase, large increase, Small Reduction, large reduction	
<b>Education</b>							
Primary school	Yes		Great Wood Primary School - 210 2 Thomas' Catholic Primary School - 210	Less (92 places) More (- 8 places)	No Change	Small Reduction	
Secondary School	No	Nearest in Cheadle	Painsley Catholic College - 793	More (- 110 places)	No Change	Small Reduction	
College	No	Nearest in Cheadle	Moorlands VI Form Centre - 400	Less	No Change	Small Reduction	
<b>Health</b>							
GP surgery	Yes		1 2000 patients	More but accepting new patients	No Change	Small Increase	
Dentists	No	Nearest in Cheadle	Not accepting NHS Patients	More	No Change	Small Increase	
Hospital	No	Nearest Cheadle Hospital	75,000	Equal	No Change	Small Increase	
Hospital with A & E	No	Nearest University Hospital of North Staffordshire	Currently has 500,000 but can cope with more	More	No Change	Small Increase	
Opticians	No	Nearest in Cheadle	Accepting New Patients	Less	No Change	Small Increase	
<b>Community/Social Facilities</b>							
Village hall	Yes		1 at Tean (serves lower and Upper Tean)	Equal	No Change	No Change	
Post Office	Yes		1	Less	No Change	Small Reduction	
Churches	yes		1	Equal	No Change	No Change	
<b>Leisure Facilities</b>							
Swimming Pools	No	Nearest in Cheadle (South Moorlands Leisure Centre Approx 2.17 miles)		Equal	No Change	Small Increase	
Sports Pitches	Yes		1 1000 per 1.6 ha	Equal	No Change	Small Increase	
Library	yes	has a mobile Library service		Equal	May expand mobile service	No Change	
Public Parks	No	Nearest in Cheadle	4500	More	No Change	Small Increase	
Fitness Centres (gyms)	No	Nearest South Moorlands in Cheadle 9Approx 2.17 miles)		More	No Change	Small Increase	
<b>Emergency Services</b>							
Police		Served by Staffordshire Police (Moorlnads East NPU)	Based at Cheadle (Approx 2.43 miles)	Equal	No Change	No Change	
Fire		Served by Staffordshire Fire and Rescue Service	Nearest in Cheadle (Approx 2.3 miles)	Equal	No Change	No Change	
Ambulance	Yes	Served by Staffordshire ambulance service (also known as West Midlands Ambulance Service) Nearest in Cheadle		Equal	Expansion - several new ambulances and increase of employees	Small Increase	

Services in Cheddleton	Present	Level of presence	Capacity	Demand	Future Plans	Expectations of future Demand	Summary
	Y/N	how many there are?	number	more, equal to or Less than capacity	No Change, expansion, contraction	No Change, Small Increase, large increase, Small Reduction, large reduction	
<b>Education</b>							
Primary school/First School	Yes	1	St Edward's Cofe (C) First School - 225	Less (42 places)	No Change	Small Reduction	
Secondary School	No	Nearest in Leek	St Edwards Cofe Middle School - 736	More ( - 29 places)	No Change	Small Reduction	
College	No	Nearest in Leek (Leek College)	500+	Less	No Change	Small Reduction	
<b>Health</b>							
GP surgery	No	Nearest in Leek	2000/doc	More but accepting new patients	No Change	Small Increase	
Dentists	Yes	1 - Cheddleton dental Practice	Not accepting NHS	More	Expansion	Small Increase	
Hospital	No	Nearest Leek Moorlands Hospital (Approx 3.5 miles)	75,000	Equal	No Change	Small Increase	
Hospital with A & E	No	Nearest is University Hospital of North Staffordshire	Currently has 500,000 but can cope with more	More	Expansion - New hospital to be built at Haywood Hospital Site (approx 5.9 miles)	Small Increase	
Opticians	No	Nearest in Leek (B Newbold (Leek) Ltd)	2000/optician	More	No Change	No Change	
<b>Community/Social Facilities</b>							
Village hall	Yes	1 - Cheddleton Community Centre		Equal	No Change	No Change	
Post Office	Yes	1- 27 Cheadle Road, Cheddleton, Leek, Staffordshire, ST13 7HN		Less	No Change	Small Reduction	
Churches	Yes	2 - St Edward's (Anglican) and St Andrew's Methodist		Less	No Change	No Change	
<b>Leisure Facilities</b>							
Swimming Pools	No	Nearest in Leek (Approx 3.5 miles)		More	No Change	Small Increase	
Sports Pitches	Yes	1 - Cheddleton Playing Field		Equal	No Change	Small Increase	
Library	Yes	Has a mobile Library service		Equal	May expand mobile service	No Change	
Public Parks	No	Nearest in Leek		More	No Change	Small Increase	
Fitness Centres (gyms)	No	Nearest in Leek		More	No Change	Small Increase	
<b>Emergency Services</b>							
Police	Served by Staffordshire Police (Moorlands East NPU)	Nearest is Endon police Station (Approx 3.9 Miles)		More	No Change	No Change	
Fire	Served by Staffordshire Fire and Rescue Service	Served by Leek Fire Station (Approx 3.6 miles)		More	No Change	No Change	
Ambulance	yes	Served by Staffordshire ambulance service (also known as West Midlands Ambulance Service) Nearest is in Leek		Equal	Expansion - several new ambulances and increase of employees	Small Increase	



Services in Endon	Present	Level of presence	Capacity	Demand	Future Plans	Expectations of future Demand	Summary
	Y/N	how many there are?	number	More, Equal to or Less than capacity	No Change, expansion, contraction	No Change, Small Increase, large increase, Small Reduction, large reduction	
<b>Education</b>							
Primary school	Yes		Endon Hall Primary School - 210 St Lukes Cofe Primary School - 200	More (- 2 places)	More (-18 places)	No Change	Small Reduction
Secondary School	Yes		1 Endon High School - 700	More (- 23 places)	No Change	No Change	
College	No	Nearest is Leek College	500+	Less - Currently has around 400 students (full time)	No Change	No Change	
<b>Health</b>							
GP surgery	Yes	1 - The Surgery, Station Road, Endon, Stoke-on-Trent, ST99DN	2000	More but accepting new patients	No Change	No Change	Small Increase
Dentists	Yes	1 - Endon Dental Care	Not accepting New NHS Patients	More	No Change	No Change	
Hospital	No	Nearest is John Munroe Independent Hospital in Leek	75,000	Equal	No Change	No Change	
Hospital with A & E	No	Nearest is University Hospital of North Staffordshire	Currently has 500,000 but can cope with More	More	Expansion - new hospital to be built on Haywood Hospital Site (Approx 3.5 Miles)	No Change	
Opticians	No	Nearest is 48 Millrise Road, Milton, Stoke-on-Trent, Staffordshire, ST2 7BW	2000/optician	More	No Change	No Change	
<b>Community/Social Facilities</b>							
Village hall	Yes	Endon Village Hall		Equal	No Change	No Change	Small Increase
Post Office	No	Nearest one is 30 Leek Road, Stockton Brook, Stoke-On-Trent, Stoke on Trent, ST9 9NH		Less	No Change	No Change	
Churches	Yes	2 - Endon Methodist Church, and St Lukes Church		Less	No Change	No Change	
<b>Leisure Facilities</b>							
Swimming Pools	No	Nearest is Dynamics Dimensions Leisure Centre in Stoke on Trent (Approx 4.06 Miles)		More	No Change	No Change	Small Increase
Sports Pitches	Yes		2	More	Possible expansion - Want to build new pitch at the back of existing site	No Change	
Library	yes	has a mobile Library service		Equal	May expand mobile service	No Change	
Public Parks	No	nearest is in Stoke on Trent		Equal	No Change	No Change	
Fitness Centres (gyms)	No	Nearest is Dynamics Dimensions Leisure Centre in Stoke on Trent (Approx 4.06 Miles)		More	No Change	No Change	
<b>Emergency Services</b>							
Police		Served by Staffordshire Police (Moorlands West NPU)	1 police post in Endon	Less	No Change	No Change	Small Increase
Fire		Served by Staffordshire Fire and Rescue Service	Nearby stations at Ipstones and Leek (Approx 4.62 miles)	More	No Change	No Change	
Ambulance	Yes	Served by Staffordshire ambulance service (also known as West Midlands Ambulance Service) Nearest is in Leek		More	Expansion - several new ambulances and increase of employees	No Change	

Services in Blythe Bridge	Present	Level of presence	Capacity	Demand	Future Plans	Expectations of future Demand	Summary
	Y/N	how many there are?	number	More, Equal to or Less than capacity	No Change, expansion, contraction	No Change, Small Increase, large increase, Small Reduction, large reduction	
<b>Education</b>							
Primary school	Yes		Springcroft Primary School - 211 Forsbrook 2 CE(VC) Primary School - 238	Less (18 places)	No Change	Small Reduction	
Secondary School	Yes		1 Blythe Bridge High School and College - 1054	Less - (27 places)	No Change	Small Reduction	
College	Yes		1 Blythe Bridge High School and College - 1054	Less - (27 places)	No Change	Small Reduction	
<b>Health</b>							
GP surgery	Yes	2 - Trinity Medical Centre and Dr J Pipel and Pirs	4000	More	Plans for a new primary care facility	Small Increase	
Dentists	No	Nearest one is Meir Dental Care	Not accepting new NHS Patients	More	Plans for a new primary care facility	Small Increase	
Hospital	No	Nearest is Longton Hospital in Stoke on Trent (Approx 3 miles)		Less	No Change	Small Increase	
Hospital with A & E	No	Nearest is University Hospital of North Staffordshire	Currently has 500,000 but can cope with More	More	No Change	Small Increase	
Opticians	Yes	Gillian Scarisbrick 266 Uttoxeter Rd Blythe Bridge Stoke-on-Trent Staffordshire ST11 9LY	2000	More	No Change	Small Increase	
<b>Community/Social Facilities</b>							
Village hall	Yes	1 - Blythe Bridge and Forsbrook Village Hall	booked out frequently	Equal	No Change	No Change	
Post Office	Yes	1 - 238 Uttoxeter Road, Blythe Bridge, Stoke on Trent, Staffordshire, ST11 9LY		Less	No Change	Small Reduction	
Churches	Yes	2 - Blythe Bridge Methodist Church and St Peter's C of E Church		Less	No Change	No Change	
<b>Leisure Facilities</b>							
Swimming Pools	No	Nearest is Longton Swimming Pool in Stoke on Trent (Approx 1.88 miles)		More	No Change	Slight increase	
Sports Pitches	Yes	3		More - 2 new pitches required	No Change	Slight increase	
Library	Yes	1 - Uttoxeter Rd Blythe Bridge Stoke-On-Trent Staffordshire ST11 9JR		Less	No Change	No Change	
Public Parks	No	Nearest in Cheadle	4500	More	No Change	Slight increase	
Fitness Centres (gyms)	No	Nearby Meir Fitness Centre (Approx 1.67 miles)		Equal	No Change	Slight increase	
<b>Leisure Facilities</b>							
Police		Served by Staffordshire Police (Moorlands East NPU) 1 Police Post in Uttoxeter Rd Blythe Bridge.	Police Post only open 9-11 Mon - Fri	Less	looking for joint facility	No Change	
Fire		Served by Staffordshire Fire and Rescue Service Served by: Uttoxeter Road, Longton ST3 1NS		Equal	No Change	No Change	
Ambulance	Yes	Served by Staffordshire ambulance service (also known as West Midlands Ambulance Service) nearest is Uttoxeter Ambulance Service		Equal	Expansion - several new ambulances and increase of employees	Small Increase	

\*Playing Pitch Assessment: Staffordshire Moorlands. Strategy and Action Plan 2003 - 2018

Population 5008

Services in Ipstones	Present	Level of presence	Capacity	Demand	Future Plans	Expectations of future Demand	Summary
	0	how many there are?	number	More, Equal to or Less than capacity	No Change, expansion, contraction	No Change, Small Increase, large increase, Small Reduction, large reduction	
<b>Education</b>							
Primary school	Yes	1 (first school),	St Leonards Cofe First School - 89	Less (41 places)	No Change	Small Reduction	
Secondary School	No	Nearest is in Cellarhead	Moorside High School - 719	Less (23 places)	No Change	Small Reduction	
College	No	Nearest is Moorlands sixth form college		Less	No Change	Small Reduction	
<b>Health</b>							
GP surgery	Yes	1 - Dr D O Yates & Ptrs Memorial Hall (for visiting doctors)	2000 - Accepting New Patients	Less	No Change	Small Increase	
Dentists	No	Nearest is Cheddleton Dental Practice	Not accepting NHS	More	No Change	Small Increase	
Hospital	No	Nearest is Leek Moorlands Hospital	75,000	Less	No Change	No Change	
Hospital with A & E	No	Nearest is University Hospital of North Staffordshire	Currently has 500,000	More	No Change	Small Increase	
Opticians	No	Nearest is Nusyte Opticians, 50 High Street, Cheadle, Stoke-on-Trent, ST10 1AF		More - but accepting new patients	No Change	Small Increase	
<b>Community/Social Facilities</b>							
Village hall	No	Is a memorial hall and village hall in nearby Foxt		Less	No Change	No Change	
Post Office	Yes	1 - 2 Froghall Road, Ipstones, Stoke-On-Trent, Staffordshire, (shared with the village shop) also post office in nearby Foxt, Froghall, Stoke-On-Trent, Stoke on Trent		Less	No Change	Small Reduction	
Churches	Yes	2 - St Leonard's Methodist Church, Ipstones St Leonard's C of E Church, Ipstones		Less	No Change	No Change	
<b>Leisure Facilities</b>							
Swimming Pools	No	Nearest in Leek		More	No Change	Small Increase	
Sports Pitches	No	Nearest in Cheddleton		More	Priority to provide playing fields and play area safety surface	Small Increase	
Library	Yes	Has a mobile Library service		Equal	May expand mobile service	No Change	
Public Parks	No	Nearest in Leek		More	No Change	Small Increase	
Fitness Centres (gyms)	No	Nearest in Leek		More	No Change	Small Increase	
<b>Leisure Facilities</b>							
Police	Served by Staffordshire Police (Moorlands East NPU)	Leek police station (Approx 3.7 miles)		More	No Change	No Change	
Fire	Yes	Froghall Road, Ipstones ST10 2NA		Less	No Change	No Change	
Ambulance	Yes	Served by Staffordshire ambulance service (also known as West Midlands Ambulance Service) Nearest is Leek Ambulance Station)		More	Expansion - several new ambulances and increase of employees	Small Increase	

Services in Kingsley	Present	Level of presence	Capacity	Demand	Future Plans	Expectations of future Demand	Summary
	Y/N	how many there are?	number	More, Equal to or Less than capacity	No Change, expansion, contraction	No Change, Small Increase, large increase, Small Reduction, large reduction	
<b>Education</b>							
Primary school	Yes	1	St Werburgh's Cofe (A) Primary School - 157	Less (33 places)	No Change	Small Reduction	
Secondary School	No	Nearest is in Cellarhead	Moorside High School - 719	Less (23 places)	No Change	Small Reduction	
College	No	Nearest Leek College	500+	Less - Currently has around 400 students (full time)	No Change	Small Reduction	
<b>Health</b>							
GP surgery	No	Nearest is Dr K S Upton & Ptrs, The Tardis Surgery, Queen Street, Cheadlen-Trent, Stoke-on-Trent, ST101BH	2000	More	No Change	Small Increase	
Dentists	No	Nearest is Cheadle Dental Care Central Buildings, High Street, Cheadle, Stoke-on-Trent, Staffordshire, ST10 1AR	Not accepting NHS Patients	More	No Change	Small Increase	
Hospital	No	Nearest is Cheadle Hospital (approx 2.33 miles)		Equal	No Change	Small Increase	
Hospital with A & E	No	Nearest is University Hospital of North Staffordshire	Currently has 500,000, capacity to hold More	More	No Change	Small Increase	
Opticians	No	Nusyte Opticians 50 High Street, Cheadle, Stoke-on-Trent, ST10 1AF		More - but accepting new patients	No Change	No Change	
<b>Community/Social Facilities</b>							
Village hall	Yes	Kingsley Village Hall		Equal	No Change	No Change	
Post Office	Yes	Main at Kingsley Village Hall, High Street, Kingsley, Staffordshire, ST10 2AE		Equal	Post office soon to become a bank.	Small Increase	
Churches	Yes	2		Less	No Change	No Change	
<b>Leisure Facilities</b>							
Swimming Pools	No	Nearest in Cheadle (Approx 2.88 miles)		Equal	No Change	Small Increase	
Sports Pitches	Yes	1 - Youth Club with sports field		Equal*	No Change	No Change	
Library	Yes	Has a mobile Library service		Equal	May expand mobile service	No Change	
Public Parks	No	Nearest in Cheadle		Equal	No Change	Small Increase	
Fitness Centres (gyms)	No	Nearest in Cheadle		Equal	No Change	Small Increase	
<b>Emergency Services</b>							
Police	Served by Staffordshire Police (Moorlands East NPU)	Based at Cheadle Police Station (2.13 miles)		Equal	No Change	No Change	
Fire	Served by Staffordshire Fire and Rescue Service	Nearest - Ashbourne Road, Cheadle ST10 1HF		Equal	No Change	No Change	
Ambulance	Yes	Served by Staffordshire ambulance service (also known as West Midlands Ambulance Service) Nearest is Cheadle Ambulance Station		Equal	Expansion - several new ambulances and increase of employees	Small Increase	

\*Playing Pitch Assessment: Staffordshire Moorlands. Strategy and Action Plan 2003 - 2018

Services in Leek	Present	Level of presence	Capacity	Demand	Future Plans	Expectations of future Demand	Summary
	Y/N	how many there are?	number	more, equal to or Less than capacity	No Change, expansion, contraction	No Change, Small Increase, large increase, Small Reduction, large reduction	
<b>Education</b>							
Primary school	Yes		Leek First School - 225 First school - 313 200 210 6174 Westwood Woodcroft First School - All Saints' CE(VA) First School Beresford Memorial CE(VA) First School - St Mary's Rc Primary School - 195	Less (70 places) Less (19 places) Less (6 places) Less (33 places) Less (46 places) Less (68 places)	No Change	Small Reduction	
Secondary School	Yes		Westwood College - 874 Leek High - Specialist Technology School - 652 View Middle School - 495 CofE Middle School - 736	More (- 74 places) Less (179 places) Less (16 places) More (- 29 places)	No Change	Small Reduction	
College	Yes	Leek College	500+	Less - Currently has around 400 students (full time)	No Change	Small Reduction	
<b>Health</b>							
GP surgery	Yes	4		More but all accepting new patients	No Change	Small Increase	
Dentists	Yes	5		Health Centre accepting new patients, all others not accepting NHS More	Expansion (new health centre)	Small Increase	
Hospital	Yes	2 - Leek Moorlands Hospital (minor injuries) and John Munroe Independent Hospital	75,000	Less	No Change	Small Increase	
Hospital with A & E	No	University Hospital Of North Staffordshire	Currently has 500,000, capacity to hold more	More	No Change	No Change	
Opticians	Yes	3		More	No Change	Small Increase	
<b>Community/Social Facilities</b>							
Village hall	Yes	1		Equal	No Change	No Change	
Post Office	Yes	4 - Leek United Norwest Co-op Ltd, Food Market, Portland Street North, Leek, Staffordshire Picton Street 46 Picton Street, Leek, Staffordshire Mill Street 162 Mill Street, Leek, Staffordshire Ball Haye Green Abbots Road, Leek, Staffordshire		Less	No Change	Small Increase if surrounding post offices are closed	
Churches	Yes	5 - Leek All Saints, Compton, Leek S.Edward the Confessor, Leek S.Luke, Leek S.Paul Leek, S.John's Mission Room		Less	No Change	No Change	
<b>Leisure Facilities</b>							
Swimming Pools	Yes	1		Less	No Change	Small Increase	
Pports Pitches	Yes	11		Less	Talks of providing new play and sports facilities to create a sports village	Has been indicated that the number of clubs will reduce unless there are incentives to attract or retain younger players in the area.	
Library	Yes	Leek Library		Equal	No Change - A new Library has been constructed on the site of the existing Library.	No Change	
Public Parks	Yes	2 - Brough Park and Brough Park Fields		Equal	No Change	Small Increase - due to the Councils encouragement of 'healthy living'	
Fitness Centres (gyms)	Yes	3 - Consists of: tennis and squash courts, two golf courses, bowling greens, running track, cricket and football pitches.		Less	No Change	No Change	
<b>Emergency Services</b>							
Police	Served by Staffordshire Police	Station in Leek		Less	Looking to extend opening times	No Change	
Fire	Yes	Station in Leek		Less	No Change	No Change	
Ambulance	Yes	Served by Staffordshire ambulance service (also known as West Midlands Ambulance Service) Station in Leek		Less	Expansion - several new ambulances and increase of employees	Small Increase	

Population

19880

\* The Messenger - Staffordshire Moorlands Community Paper, Dec 2007.

Services in Oakamoor	Present	Level of presence	Capacity	Demand	Future Plans	Expectations of future Demand	Summary
	0	how many there are?	number	More, Equal to or Less than capacity	No Change, expansion, contraction	No Change, Small Increase, large increase, Small Reduction, large reduction	
<b>Education</b>							
Primary school	Yes	1	The Valley Primary School - 70	Less (33 places)	No Change	Small Reduction	
Secondary School	No	Nearest is in Cheadle	Painsley Catholic College - 793	More (- 110 places)	No Change	Small Reduction	
College	No	Nearest is Denstone College	341 boys and 179 girls, including 93 boys and 47 girls in the 6th form	Less	No Change	Small Reduction	
<b>Health</b>							
GP surgery	No	Nearest in Alton		More but alton accepting new patients	No Change	Small Increase	
Dentists	No	Nearest is millenium dentistry in cheadle	Not accepting NHS	More	No Change	Small Increase	
Hospital	No	Nearest is Cheadle Hospital (Approx 2.98 miles)	75,000	Equal	No Change	Small Increase	
Hospital with A & E	No	Nearest is University Hospital Of North Staffordshire	Currently has 500,000, capacity to hold More	More	No Change	No Change	
Opticians	No	Nearest is Nusyte Opticians (2.7 miles) 50 High Street, Cheadle, Stoke-on-Trent, ST10 1AF		More	No Change	Small Increase	
<b>Community/Social Facilities</b>							
Village hall	Yes	1		Less	No Change	No Change	
Post Office	Yes	1 - 8 Starwood Terrace, Oakamoor, Stoke-On-Trent, Staffordshire, ST10 3AA		Less	No Change	Small Reduction	
Churches	Yes	2		Less	No Change	No Change	
<b>Leisure Facilities</b>							
Swimming Pools	No	Nearest in Cheadle (Approx 2.69 miles)		Equal	No Change	Small Increase	
Sports Pitches	Yes	2 (Boltons and Banks Farm)		More	Expansion and improvements to the sports areas	Small Increase	
Library	Yes	1 - Mobile Library		Equal	May expand mobile service	No Change	
Public Parks	No	Nearest in Cheadle		More	No Change	Small Increase	
Fitness Centres (gyms)	No	Nearest in Cheadle (Approx 2.69 miles)		Equal	No Change	Small Increase	
<b>Emergency Services</b>							
Police	Served by Staffordshire Police (Moorlands East NPU)	Based at Cheadle Police Station		Equal	No Change	No Change	
Fire	Served by Staffordshire Fire and Rescue Service	Nearest station Ashbourne Road, Cheadle ST10 1HF		Equal	No Change	No Change	
Ambulance	Yes	Served by Staffordshire ambulance service (also known as West Midlands Ambulance Service) Nearest in Cheadle		Equal	Expansion - several new ambulances and increase of employees	Small Increase	

Services in Waterhouses	Present	Level of presence	Capacity	Demand	Future Plans	Expectations of future Demand	Summary
	Y/N	how many there are?	number	More, Equal to or Less than capacity	No Change, expansion, contraction	No Change, Small Increase, large increase, Small Reduction, large reduction	
<b>Education</b>							
Primary school	Yes	1	Waterhouses Cofe (C) Primary School - 157	Less (83 places)	No Change	Small Reduction	
Secondary School	No	Nearest is in Cheadle	Painsley Catholic College - 793	More ( - 110 places)	No Change	Small Reduction	
College	No	Nearest is Denstone College	341 boys and 179 girls, including 93 boys and 47 girls in the 6th form	Less	No Change	Small Reduction	
<b>Health</b>							
GP surgery	Yes	1 - Dr V Cooper & Pirs, The Surgery, Waterfall Lane, Waterhouses, Stoke-on-Trent, ST103HY	2000- Accepting new patients	Less	No Change. Care Centre in Alton is available if required.	Small Increase	
Dentists	No	Nearest is Millenium Dentistry (6.2 miles) 40/42 Tape Street, Cheadle, Stoke-on-Trent, Staffordshire, ST10 1EP	No NHS	More	No Change. Care Centre in Alton is available if required.	Small Increase	
Hospital	No	Nearest is St Oswald's Hospital (Vascular surgery only) (approx 6.5 miles)		More	No Change	Small Increase	
Hospital with A & E	No	Nearest is University Hospital Of North Staffordshire	Currently has 500,000	More	No Change	Small Increase	
Opticians	No	Nearest is Nusyte Opticians (6.2 miles) 50 High Street, Cheadle, Stoke-on-Trent, ST10 1AF		More but accepting new patients	No Change	Small Increase	
<b>Community/Social Facilities</b>							
Village hall	No	nearest is Waterfall		More	Outlined as priority	Small Increase	
Post Office	Yes	Manifold Stores, Waterhouses, Stoke-On-Trent, Stoke on Trent, ST10 3HT		Less	No Change	Small Reduction	
Churches	No	Nearest is Waterfall Parish Church (Approx 0.8 miles)		More	No Change	No Change	
<b>Leisure Facilities</b>							
Swimming Pools	No	Nearest one in Cheadle (approx 6.36 miles)		More	No Change	Small Increase	
Sports Pitches	Yes	2 - Playing Fields and play area		More	Expansion - possible provision of four mini soccer pitches	Small Increase	
Library	Yes	1 - mobile Library		Equal	May expand mobile service	No Change	
Public Parks	No	Nearest one in Cheadle		More	No Change	Small Increase	
Fitness Centres (gyms)	No	Nearest one in Cheadle		More	No Change	Small Increase	
<b>Leisure Facilities</b>							
Police		Served by Staffordshire Police (Moorlands East NPU) 1 Police Post in Waterhouses		Less	No Change	No Change	
Fire		Served by Staffordshire Fire and Rescue Service Nearest station is Ashbourne Road, Cheadle ST10 1HF		More	No Change	No Change	
Ambulance	Yes	Served by Staffordshire ambulance service (also known as West Midlands Ambulance Service) Nearest is Cheadle		More	Expansion - several new ambulances and increase of employees	Small Increase	

Services in Werrington & Cellarhead	Present	Level of presence	Capacity	Demand	Future Plans	Expectations of future Demand	Summary
	Y/N	how many there are?	number	More, Equal to or Less than capacity	No Change, expansion, contraction	No Change, Small Increase, large increase, Small Reduction, large reduction	
<b>Education</b>							
Primary school	Yes	1	Werrington Primary School - 420	Less (69 places)	No Change	Small Reduction	
Secondary School	yes	1	Moorside High School in Cellarhead - 719	Less (23 places)	No Change	Small Reduction	
College	No	Moorlands VI Form Centre - 4	500	less	No Change	Small Reduction	
<b>Health</b>							
GP surgery	Yes	1 - Dr A G Bennett & Pirs Werrington Village Surgery, Ash Bank Road, Werrington, Stoke-on-Trent, ST9 0JS		More but accepting New Patients	No Change	Small Increase	
Dentists	Yes	1 - Werrington Dental Practice 497 Ash Bank Road, Werrington, Stoke-on-Trent, Staffordshire, ST9 0DT	Not accepting NHS patients	More	No Change	Small Increase	
Hospital	No	Nearest is Bucknall Hospital (only offers geriatric medicine), also Longton Hospital in Stoke on Trent (approx 3 miles)	75,000	Equal	No Change	Small Increase	
Hospital with A & E	No	Nearest is University Hospital Of North Staffordshire	Currently has 500,000 but can cope with More	More	Expansion - new hospital to be built at the Haywood Hospital Site (Approx 4 miles away)	Small Increase	
Opticians	No	Nearest is A Hurd Opticians 48 Millrise Road, Milton, Stoke-on-Trent, Staffordshire, ST2 7BW		More	No Change	Small Increase	
<b>Community/Social Facilities</b>							
Village hall	Yes	1 - Werrington Village Hall		Equal	No Change	No Change	
Post Office	Yes	Ash Bank Road, Werrington, Stoke on Trent, Staffordshire, ST9 0JP		Less	No Change	Small Reduction	
Churches	Yes	1 - St Philips C Of E Church, The Vicarage, 360 Ash Bank Rd, Werrington Stoke-on-Trent ST9 0JS		Equal	No Change	No Change	
<b>Leisure Facilities</b>							
Swimming Pools	No	Nearest in Longton (3.21 miles)		More	No Change	Small Increase	
Sports pitches	Yes	1 at Cellarhead		More	Long term plans to improve and provision of new play site	Small Increase	
Library	Yes	1 - Ash Bank Rd Werrington, Stoke-on-Trent, ST9 0JS 01782 302706		Less	No Change	No Change	
Public Parks	No	Nearest in Cheadle	N/A	More	Long term plans to improve and provision of new play site	Small Increase	
Fitness Centres (gyms)	No	Nearest is Formula Leisure Ltd (approx 3.26 miles)	N/A	More	No Change	Small Increase	
<b>Emergency Services</b>							
Police	Served by Staffordshire Police (Moorlands East NPU)	1 Police Post in Werrington		Less	Under used but plans to bring back into use.	No Change	
Fire	Served by Staffordshire Fire and Rescue Service	Near s Stoke on Trent uttoxeter Rd (Approx 4.7 miles)		More	No Change	No Change	
Ambulance	Yes	Served by Staffordshire ambulance service (also known as West Midlands Ambulance Service) Near is Cheadle (Approx 5.4 miles)		More	Expansion - several new ambulances and increase of employees	Small Increase	